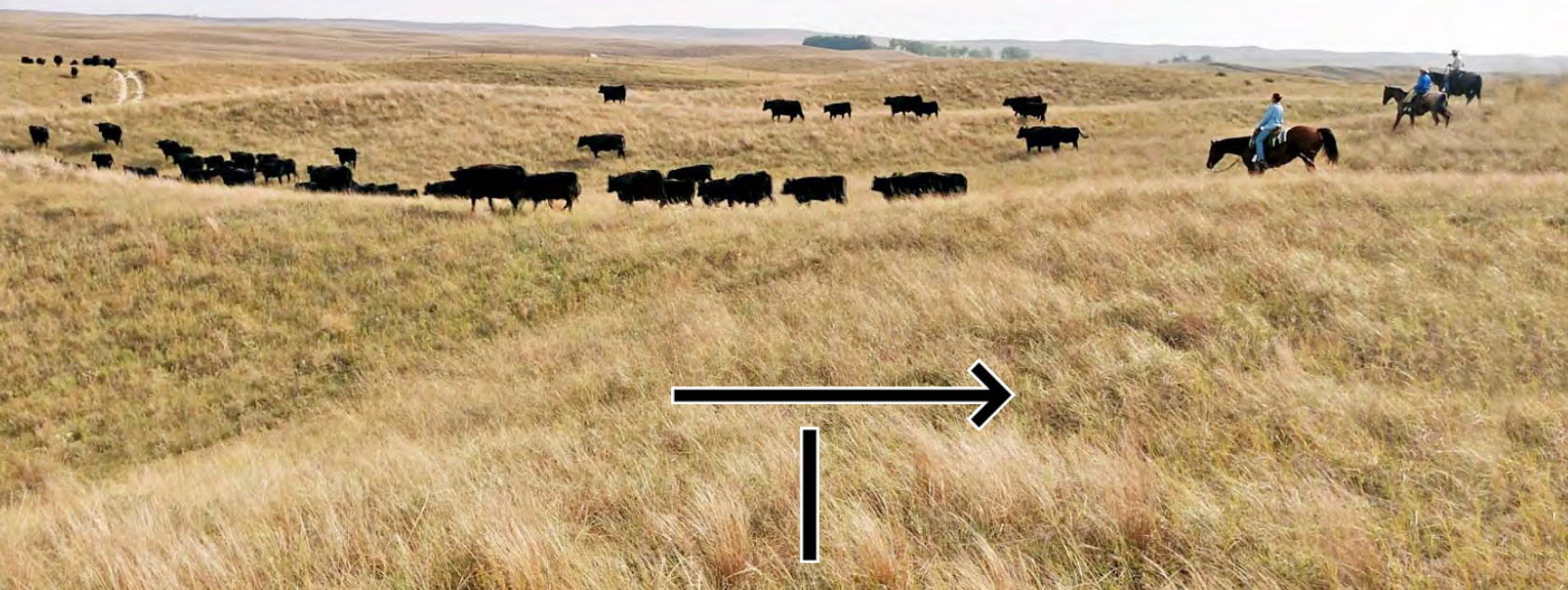


15th Annual

ARROW ONE ANGUS

Bull & Heifer Sale



MONDAY, FEBRUARY 26, 2018

1:00 P.M. CST

LINCOLN CO FAIRGROUNDS / NORTH PLATTE, NE

ARROWONEANGUS.COM



Dear friends, family, and customers -

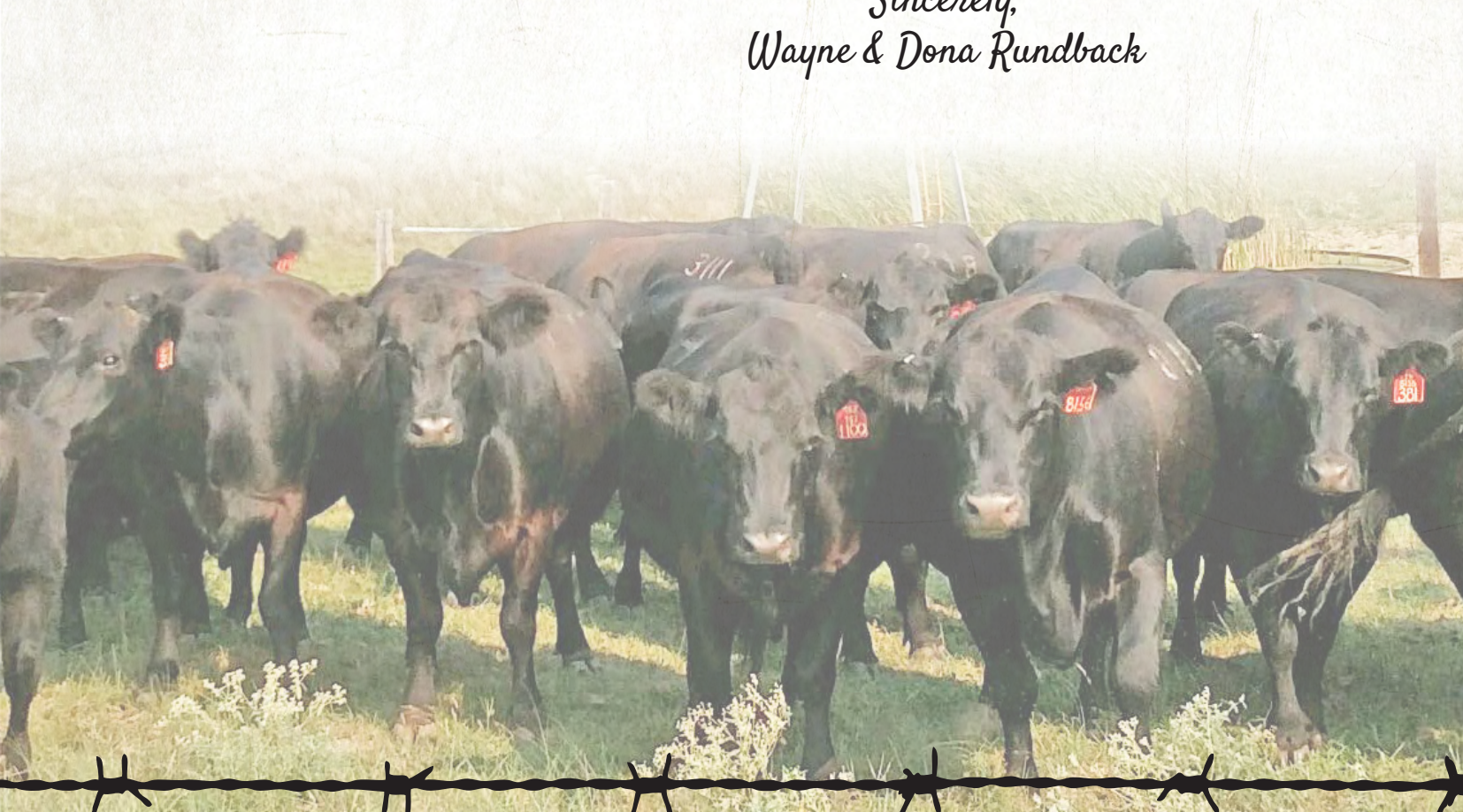
At Arrow One Angus, our main objective is supplying high quality, high performance genetic cattle for you, our customers. Our criteria in our cow herd is easy fleshing, growth, soundness, reproduction, eye appeal, milking ability, calving ease, efficiency and a good disposition. At Arrow One Angus, we feel the dam is a very important factor in our breeding selections.

Our cattle have been on a complete vaccination program with Stockmans Vet Clinic. The bulls are semen checked and tested BVD negative. The young bulls are not adjusted for 365 days on IMF, RIB, Pelvic, and Scrotal because February 22nd was our cut off date. They need to be a year of age for this information, but as always, these bulls and heifers come with the Arrow One Angus Guarantee.

The feed program the bulls and heifers are on is corn screenings, distillers and a hay mix ration. As always, you have a personal invitation to our ranch at your convenience to evaluate our cattle---cows and calves, bulls and heifers. The coffee is on and we would love to visit and show you what we have done with our Angus cow herd.

Wayne and I are so very thankful to each of you, we do not take for granted the importance of all the people who support us and attend our bull and heifer sales. We would personally like to say "Thanks!" for your input and support in our program.

*Sincerely,
Wayne & Dona Rundback*



ARROW ONE ANGUS

MONDAY, FEBRUARY 26, 2018 / 1:00 P.M. CST

FREE Wintering until April 1, 2018 / FREE Delivery within 150 mile radius

FREE LUNCH AT NOON!

SALE DAY PHONE 308-532-1204

SALE LOCATION

Lincoln County Fairgrounds
5015 W Rodeo Rd Ave
North Platte, NE 69101

SALE CONTACTS

Wayne and Dona Rundback
3453 Brown Road
North Platte, NE 69101
Wayne Cell.....308-530-4859
Home Phone.....308-534-0382

AUCTIONEER

Tracy Harl.....402-461-3575

REPRESENTATIVES

Adam Conover.....Angus Journal / 816-676-8560
Randy Rasby.....Livestock Plus / 308-386-4857
Kyle Schow308-289-3772
Jim Williams.....308-222-0172

VETERINARIAN

Stockman's Vet Clinic
3666 N Stockman Rd / North Platte, NE 69101
Phone.....308-532-7210

CATALOG DESIGN

Hannah Shroyer.....Design Unbridled / 402-841-4216

CATALOG PRINTING

Meyer Creative.....North Platte, NE / 308-221-6100

ARROWONEANGUS.COM

ALL BULLS WILL BE FERTILITY TESTED AND WILL SELL AS GUARANTEED BREEDERS.

Bulls are AM Free, NH Free and CA Free. SCROTAL & PELVIS DATA WILL BE ON AN ADDITIONAL SHEET SALE DAY

TERMS AND CONDITIONS

The cattle sell under the suggested Terms and Conditions of the American Angus Association dated June 12, 1988. These terms are available at anytime upon request.

LIABILITIES

All persons attending our annual 2018 Bull and Heifer Sale do so at their own risk. Arrow One Angus and the Lincoln County Fairgrounds assume no liability, legal, or otherwise, for any accidents which may occur.

GUARANTEE

All bulls selling for \$2,000.00 or more are guaranteed against breeding injury for the first breeding season. Breeding season is defined as the 90-day period following the first turnout of the bulls. If a replacement bull is available, he will be provided. Or if the buyer prefers, credit toward one bull will be given in the following year's sale minus salvage value of the injured bull. Please notify us as soon as possible should injury occur and preferably before September 1st, 2018.

\$100 discount for taking bulls home on sale day.

Bulls and heifers are non-creep fed.
Retaining 1/3 interest on all bulls.

Reference Sires



Basin Payweight 107S

REG: #15332022 DOB: 02/01/2006 TATTOO: 107S

Vermilion Dateline 7078	Connealy Dateline
Vermilion Payweight J847	Vermilion Blackbird 5044
Vermilion Lass 7969	Top Secret 9757 E A R
	Vermilion 155 Lass 2046
C A Future Direction 5321	G A R Precision 1680
Basin Lucy 3829	C A Miss Power Fix 308
Basin Lucy 178E	Basin Max 602C
	Basin Lucy 855A

CED	BW	WW	YW	RADG	SC	DOC	MILK
1	3.3	74	123	.32	1.16	32	21
CW	MARB	RE	FAT	\$W	\$F	\$G	\$B
69	.49	.91	.009	60.56	98.48	32.87	184.51

107S is the elite sire with five very important traits---Docility---WW---YW---CW---REA. His sons have excelled in feed efficiency and gain. Added superior performance, length, muscle, and carcass weight in a moderate framed package.



Connealy Guinness

REG: #17031279 DOB: 01/31/2011 TATTOO: 1337

Connealy Full Freight	Connealy Freightliner
Connealy Dublin 8223	Powesta of Conanga 687 15
Black Rina of Conanga 69	Connealy Onward
	Black Race of Conanga 123
EGL Target 1148	Bon View New Design 1407
Panda of Conanga 3609	EGL 9420
Pondera of Conanga 750	Connealy Virginian 681
	Paplan of Conanga

CED	BW	WW	YW	RADG	SC	DOC	MILK
3	1.7	61	109	.23	.90	17	28
CW	MARB	RE	FAT	\$W	\$F	\$G	\$B
40	1.11	.27	.059	60.79	78.17	40.03	142.13

This stout, big bodied, moderate framed sire will add pounds without increasing frame to your calves. He sires deep bodied, easy doing, productive females. His first calf crop affirms his ability to transmit thickness and eye appeal in his calves along with low birthweight and good performance.



EF Commando 1366

REG: #17082311 DOB: 08/25/2011 TATTOO: 1366

Basin Franchise P142	C A Future Direction 5321
EF Complement 8088	Basin Chloe 812L
EF Everelda Entense 6117	BR Midland
	H F Everelda Entense 869
B/R Ambush 28	Rockn D Ambush 1531
Riverbend Young Lucy W1470	B/R Ruby of Tiffany 8250
Riverbend Young Lucy T1080	S S Objective T510 0T26
	B/R Young Lucy 2118

CED	BW	WW	YW	RADG	SC	DOC	MILK
14	-0.8	58	96	.18	-.14	2	28
CW	MARB	RE	FAT	\$W	\$F	\$G	\$B
28	.90	.75	.036	67.86	51.59	48.16	116.85

A no miss calving ease bull that sires moderate-framed, consistent cattle that are expressive in their muscle shape and phenomenal in their look. Commando's sons add CED, carcass and mating flexibility to your herd.

Reference Sires

Quaker Hill Firestorm 3PT1

REG: #17786050 DOB: 4/21/2013 TATTOO: 3PT1

Rito 112 of 2536 Rito 616	Rito 616 of 4B20 6807
GAR-EGL Protege	G A R Precision 2536
L B 6807 Isabel 339	D H D Traveler 6807
	L B E31 Isabel 168
Ideal 4355 of 0T26 2440	S S Objective T510 0T26
QHF Blackcap 6E2 of 4V16 4355	Ideal 2440 of 7407 7275
QHF Blackcap 4V16 of 1H8	Rito 2V1 of 2536 1407
	Quaker Hill Blackcap 1H8

CED	BW	WW	YW	RADG	SC	DOC	MILK
8	1.0	71	123	.18	-.48	21	30
CW	MARB	RE	FAT	\$W	\$F	\$G	\$B
57	1.07	.68	.016	78.18	78.82	47.78	163.28



Sired by the former Sire Alliance winner PROTEGE out of the famous QHF Blackcap 6E2. Top 1 % \$Beef Index with elite performance, carcass merit and \$weaning. Outstanding calf reports with progeny posting ratios of 103 for WW, YW, REA, and 108 for IMF.

PA Full Power 1208

REG: #16981588 DOB: 2/14/2011 TATTOO: 1208

G A R Predestined	B/R New Design 036
PA Power Tool 9108	G A R Ext 4206
Shamrocks Beebee Queen 3095	Bon View New Design 208
	Shamrock's Beebe Queen 1823
G A R New Design 5050	B/R New Design 036
Pine View SQR Rita W091	G A R Precision 706
Pine View Rita R084	S V F Bandolier
	G A R 1407 New Design 1552

CED	BW	WW	YW	RADG	SC	DOC	MILK
3	.6	62	112	.23	.94	24	25
CW	MARB	RE	FAT	\$W	\$F	\$G	\$B
40	1.10	.77	.005	66.32	74.99	53.85	148.96



Full Power is siring fault-free, broody functional females with excellent udders and teat quality. He sires a lot of growth and power with incredible end product merit. Few sires match Full Power's combination of growth, MARB and REA. Coupled with his breed-leading DOC.

Kraye South Dakota JK 5126

REG: #18273983 DOB: 02/10/2015 TATTOO: 5126

Mohnen Density 730	S A V 004 Density 4336
Mohnen South Dakota 402	Mohnen Jilt 910
Mohnen Jilt 539	TC Aberdeen 759
	Mohnen Jilt 787
S A V Final Answer 0035	Sitz Traveler 8180
Miss Burgess JK 9268	S A V Emulous 8145
Miss Burgess JK 7348	Connealy Lead On
	Miss Burgess JK 566

CED	BW	WW	YW	RADG	SC	DOC	MILK
4	2.0	76	120	NA	NA	23	26
CW	MARB	RE	FAT	\$W	\$F	\$G	\$B
52	.63	.46	.038	71.39	81.63	31.25	149.49

Kraye South Dakota was the top seller in the 2016 Kraye Angus Bull Sale and comes from a very powerful cow family. His calves have lots of length and depth from the sons and daughters we have so far. We are excited for his future when more progeny hit the ground!

Angus Sale Bulls



1 Arrow One Full Power 75

REG: #18915974	DOB: 1/1/17	TATTOO: 75	Act BW	Adj IMF						
PA Power Tool 9108	GAR Predestined		80	4.25						
PA Full Power 1208	Shamrocks Beebee Queen 3095		Adj 205	Adj RE						
Pine View SQR Rita W091	GAR New Design 5050		758	15.1						
	Pine View Rita R084		Adj 365	GAIN						
S A V Platinum 0010	S A V Pioneer 7301		1347	4.4						
Arrow One Blackcap 579	S A V Greystone Jannet 5345		AGE OF DAM							
Arrow One Blackcap 722	Basin Max 602C		2							
	Spring Valley Miss Blackcap									
CED	BW	WW	YW	CEM	MILK	MARB	RE	\$W	\$F	\$B
1	2.4	68	117	5	23	0.53	0.46	56.2	81.82	112.72

• RATIOS: 110 WW / 115 YW / 111 ADG / 109 RE

2 Arrow One Commando 76

REG: #18916065	DOB: 1/2/17	TATTOO: 76	Act BW	Adj IMF						
EF Complement 8088	Basin Franchise P142		80	5.44						
EF Commando 1366	EF Everelda Entense 6117		Adj 205	Adj RE						
Riverbend Young Lucy W1470	B/R Ambush 28		721	15.3						
	Riverbend Young Lucy T1080		Adj 365	GAIN						
S A V Platinum 0010	S A V Pioneer 7301		1227	4.21						
Arrow One Blackbird 537	S A V Greystone Jannet 5345		AGE OF DAM							
Arrow One Blackbird 669	Arrow One Ambush 3051		2							
	Arrow One Blackbird 418									
CED	BW	WW	YW	CEM	MILK	MARB	RE	\$W	\$F	\$B
6	2	61	104	12	26	0.54	0.45	55.57	62.64	79.87

• RATIOS: 105 WW / 105 YW / 106 ADG / 121 IMF / 110 RE
 • Recommended for heifers

3 Arrow One FireStorm 77

REG: #18917553	DOB: 1/2/17	TATTOO: 77	Act BW	Adj IMF						
GAR-EGL Protege	Rito 112 of 2536 Rito 616		78	4.38						
Quaker Hill Firestorm 3PT1	L B 6807 Isabel 339		Adj 205	Adj RE						
QHF Blackcap 6E2 of4V16 4355	Ideal 4355 of OT26 2440		820	12.9						
	QHF Blackcap 4V16 of 1H8		Adj 365	GAIN						
Arrow One Rancher 65	Kahn Broadband R A 94L		1324	4.13						
Arrow One ProudLassie 910	B/R Easter Tulloch Duch 3269		AGE OF DAM							
Arrow One Proud Lassie 7118	Spring Valley Durmax		8							
	4 G Proud Lassie 987									
CED	BW	WW	YW	CEM	MILK	MARB	RE	\$W	\$F	\$B
9	-0.2	65	110	10	30	0.69	0.46	67.22	70.87	149.04

• RATIOS: 96 BW / 114 WW / 105 YW / 101 IMF
 • Recommended for heifers

ARROW ONE ANGUS

ALL BULLS WILL BE FERTILITY TESTED AND WILL SELL AS GUARANTEED BREEDERS.

Bulls are AM Free, NH Free and CA Free.
 SCROTAL & PELVIS DATA WILL BE ON AN ADDITIONAL SHEET SALE DAY



4 Arrow One Commando 79

REG: #18951847		DOB: 1/3/17		TATTOO: 79		Act BW	Adj IMF				
EF Complement 8088		Basin Franchise P142		71	4.42						
EF Commando 1366		EF Everelda Entense 6117		Adj 205	Adj RE						
Riverbend Young Lucy W1470		B/R Ambush 28		714	15.3						
C C A Emblazon 702		O C C Emblazon 854E		Adj 365	GAIN						
Arrow one Princess 521		Limestone Blackcap R128		1311	5.26						
Arrow One Princess 981		Ironwood New Level		AGE OF DAM							
		Spring Valley Edison		2							
CED	BW	WW	YW	CEM	MILK	MARB	RE	\$W	\$F	\$B	
13	-0.7	48	83	14	23	0.47	0.37	46.42	33.98	74.79	

- RATIOS: 98 BW / 102 WW / 100 YW / 100 ADG / 104 IMF / 101 RE
- Recommended for heifers

6 Arrow One FireStorm 711

REG: #18917554		DOB: 1/3/17		TATTOO: 711		Act BW	Adj IMF				
GAR-EGL Protege		Rito 112 of 2536 Rito 616		80	4.13						
Quaker Hill Firestorm 3PT1		L B 6807 Isabel 339		Adj 205	Adj RE						
QHF Blackcap 6E2 of 4V16 4355		Ideal 4355 of 0T26 2440		757	14.8						
B C Marathon 7022		O C C Kirby 633K		Adj 365	GAIN						
Arrow One Lady Ida 839		Gibbet Hill Mignonne E37		1282	4.06						
B/R Lady Ida 7135		B/R Sleep Easy 533		AGE OF DAM							
		B/R Lady Ida 771		9							
CED	BW	WW	YW	CEM	MILK	MARB	RE	\$W	\$F	\$B	
5	1.6	60	100	7	26	0.6	0.56	57.07	56.04	138.52	

- RATIOS: 99 BW / 105 WW / 102 YW / 106 RE

7 Arrow One Commando 714

REG: #18916239		DOB: 1/4/17		TATTOO: 714		Act BW	Adj IMF				
EF Complement 8088		Basin Franchise P142		77	5.08						
EF Commando 1366		EF Everelda Entense 6117		Adj 205	Adj RE						
Riverbend Young Lucy W1470		B/R Ambush 28		752	15.2						
B/R Future Direction 330		C A Future Direction 5321		Adj 365	GAIN						
Arrow One Blackbird 777		B/R Blackcap Empress 76		1349	4.54						
Arrow One Blackbird 418		Boyd New Day 8005		AGE OF DAM							
		H A R Blackbird 270		10							
CED	BW	WW	YW	CEM	MILK	MARB	RE	\$W	\$F	\$B	
10	0	54	92	12	27	0.7	0.68	54.94	45.8	129.79	

- RATIOS: 96 BW / 105 WW / 108 YW / 107 ADG / 117 IMF / 109 RE
- Dam is a pathfinder
- Recommended for heifers

8 Arrow One Commando 716

REG: #18916060		DOB: 1/28/17		TATTOO: 716		Act BW	Adj IMF				
EF Complement 8088		Basin Franchise P142		75	4.72						
EF Commando 1366		EF Everelda Entense 6117		Adj 205	Adj RE						
Riverbend Young Lucy W1470		B/R Ambush 28		711	13.1						
Bear Mtn Wagon Master 1002		S A V Pioneer 7301		Adj 365	GAIN						
Arrow One Blackbird 5100		Stevenson Enchantress 449J		1135	3.68						
Arrow one Blackbird 019		S A V Bismarck 5682		AGE OF DAM							
		Arrow One Blackbird 580		2							
CED	BW	WW	YW	CEM	MILK	MARB	RE	\$W	\$F	\$B	
9	0.7	52	87	13	27	0.48	0.31	52.88	38.29	61.8	

- RATIOS: 102 BW / 103 WW / 105 IMF
- Recommended for heifers



9 Arrow One FireStorm 718

REG: #18917543		DOB: 1/6/17		TATTOO: 718						
GAR-EGL Protege		Rito 112 of 2536 Rito 616		Act BW	Adj IMF					
Quaker Hill Firestorm 3PT1		L B 6807 Isabel 339		81	4.05					
QHF Blackcap 6E2 of4V16 4355		Ideal 4355 of 0T26 2440		Adj 205	Adj RE					
		QHF Blackcap 4V16 of 1H8		748	12.9					
Connealy Consensus 7229		Connealy Consensus		Adj 365	GAIN					
Arrow One Dixie 215		Blue Lilly of Conanga 16		1188	4.13					
Arrow One Dixie 47		Boyd New Day 8005		AGE OF DAM						
		Wical Dixey 222		5						
CEM	BW	WW	YW	CEM	MILK	MARB	RE	\$W	\$F	\$B
6	1.6	62	108	7	27	0.75	0.44	57.63	69.31	128.47

- RATIOS: 104 WW
- Recommended for heifers



11 Arrow One FireStorm 721

REG: #18917527		DOB: 1/7/17		TATTOO: 721						
GAR-EGL Protege		Rito 112 of 2536 Rito 616		Act BW	Adj IMF					
Quaker Hill Firestorm 3PT1		L B 6807 Isabel 339		74	4.73					
QHF Blackcap 6E2 of4V16 4355		Ideal 4355 of 0T26 2440		Adj 205	Adj RE					
		QHF Blackcap 4V16 of 1H8		705	13					
V A R Reserve 1111		B/R New Day 454		Adj 365	GAIN					
Arrow One Duchess 557		Sandpoint Blackbird 8809		AGE OF DAM						
Arrow One Duchess 119		S A V Iron Mountain 8066		2						
		B/R Easter Tulloch Duch 3269								
CEM	BW	WW	YW	CEM	MILK	MARB	RE	\$W	\$F	\$B
6	1.6	63	109	8	26	0.57	0.31	57.76	70.45	114.79

- RATIOS: 102 WW / 105 IMF
- Recommended for heifers



12 Arrow One FireStorm 722

REG: #18917550		DOB: 1/8/17		TATTOO: 722						
GAR-EGL Protege		Rito 112 of 2536 Rito 616		Act BW	Adj IMF					
Quaker Hill Firestorm 3PT1		L B 6807 Isabel 339		77	3.53					
QHF Blackcap 6E2 of4V16 4355		Ideal 4355 of 0T26 2440		Adj 205	Adj RE					
		QHF Blackcap 4V16 of 1H8		722	14.5					
S Chisum 6175		S Alliance 3313		Adj 365	GAIN					
Arrow One Barbara 177		S Gloria 464		1333	4.72					
BAA Barbara 5137A		B A A Slugger 310A		AGE OF DAM						
		Paws Up 9001 Fortune		6						
CEM	BW	WW	YW	CEM	MILK	MARB	RE	\$W	\$F	\$B
7	0.9	61	100	10	26	0.53	0.59	59.97	55.33	137.58

- RATIOS: 95 BW / 101 WW / 106 YW / 111 ADG / 104 RE



13

13 Arrow One Basin Payweight 723

REG: #18917365	DOB: 1/8/17	TATTOO: 723	Act BW	Adj IMF						
Vermilion Payweight J847 Basin Payweight 107S Basin Lucy 3829 O C C Prototype 847P LaGrand Princess Eileen 0101 Hoff Princess Eileen 5128			85	3.47						
Vermilion Dateline 7078 Vermilion Lass 7969 C A Future Direction 5321 Basin Lucy 178E O C C Kanga 886K O C C Dixie Erica 867K F A R Krugerrand 410H Hoff Princess Eileen 391 017			Adj 205	Adj RE						
			777	14.6						
			Adj 365	GAIN						
			1363	4.95						
			AGE OF DAM							
			7							
CED	BW	WW	YW	CEM	MILK	MARB	RE	\$W	\$F	\$B
3	2.6	63	102	9	19	0.27	0.62	50.17	57.56	130.39

• RATIOS: 108 WW / 108 YW / 116 ADG / 104 RE

14 Arrow One Basin Payweight 725

REG: #18917367	DOB: 1/9/17	TATTOO: 725	Act BW	Adj IMF						
Vermilion Payweight J847 Basin Payweight 107S Basin Lucy 3829 Arrow One Rancher 65 Arrow One Blackcap 833 A 1 Blackcap 22			78	4.33						
Vermilion Dateline 7078 Vermilion Lass 7969 C A Future Direction 5321 Basin Lucy 178E Kahn Broadband R A 94L B/R Easter Tulloch Duch 3269 B/R Recovery 980 Arrow One Blackcap 05			Adj 205	Adj RE						
			693	13.9						
			Adj 365	GAIN						
			1168	3.64						
			AGE OF DAM							
			9							
CED	BW	WW	YW	CEM	MILK	MARB	RE	\$W	\$F	\$B
8	0.5	50	83	12	24	0.48	0.48	48.78	32.62	106.61

• RATIOS: 96 BW
 • Recommended for larger heifers

15 Arrow One Commando 726

REG: #18915025	DOB: 1/9/17	TATTOO: 726	Act BW	Adj IMF						
EF Complement 8088 EF Commando 1366 Riverbend Young Lucy W1470 ALC Nobleman N01N Arrow One Miss 83 4 G Miss 258			74	5.04						
Basin Franchise P142 EF Everelda Entense 6117 B/R Ambush 28 Riverbend Young Lucy T1080 B/R New Frontier 095 ALC LYN T03L Grandview Womack Direct 4 G Miss 976			Adj 205	Adj RE						
			578	14.8						
			Adj 365	GAIN						
			AGE OF DAM							
			9							
CED	BW	WW	YW	CEM	MILK	MARB	RE	\$W	\$F	\$B
11	0.4	51	87	16	25	0.86	0.56	49.82	38.98	110.32

• RATIOS: 91 BW / 100 WW
 • Recommended for heifers





16

16 Arrow One Full Power 729

REG: #18915986	DOB: 1/9/17	TATTOO: 729	Act BW	Adj IMF						
PA Power Tool 9108	G A R Predestined		74	5.37						
PA Full Power 1208	Shamrocks Beebee Queen 3095		Adj 205	Adj RE						
Pine View SQR Rita W091	G A R New Design 5050		721	14.1						
	Pine View Rita R084		Adj 365	GAIN						
S A V Platinum 0010	S A V Pioneer 7301		1318	4.72						
Arrow One Blackcap 428	S A V Greystone Jannet 5345		AGE OF DAM							
Arrow One New Design 64	B/R New Design 323-8212		3							
	A 1 Blackcap 11									
CED	BW	WW	YW	CEM	MILK	MARB	RE	\$W	\$F	\$B
6	0	58	102	8	23	0.61	0.43	52.81	61.11	111.24

- RATIOS: 95 BW / 103 WW / 106 YW / 104 ADG / 116 IMF / 104 RE
- Recommended for larger heifers

17 Arrow One Full Power 731

REG: #18915982	DOB: 1/10/17	TATTOO: 731	Act BW	Adj IMF						
PA Power Tool 9108	G A R Predestined		77	3.79						
PA Full Power 1208	Shamrocks Beebee Queen 3095		Adj 205	Adj RE						
Pine View SQR Rita W091	G A R New Design 5050		649	14.5						
	Pine View Rita R084		Adj 365	GAIN						
S A V Platinum 0010	S A V Pioneer 7301		1284	4.99						
Arrow One Blackbird 463	S A V Greystone Jannet 5345		AGE OF DAM							
Arrow One Blackbird 777	B/R Future Direction 330		3							
	Arrow One Blackbird 418									
CED	BW	WW	YW	CEM	MILK	MARB	RE	\$W	\$F	\$B
6	0.4	55	99	6	22	0.54	0.66	47.8	57.75	125.53

- RATIOS: 99 BW / 103 YW / 110 ADG / 107 RE
- Recommended for larger heifers



17

18 Arrow One FireStorm 738

REG: #18917555	DOB: 1/11/17	TATTOO: 738	Act BW	Adj IMF						
GAR-EGL Protege	Rito 112 of 2536 Rito 616		78	4.49						
Quaker Hill Firestorm 3PT1	L B 6807 Isabel 339		Adj 205	Adj RE						
QHF Blackcap 6E2 of 4V16 4355	Ideal 4355 of 0T26 2440		591	12.9						
	QHF Blackcap 4V16 of 1H8		Adj 365	GAIN						
Arrow One Rancher 65	Kahn Broadband R A 94L		1124	4.72						
Arrow One Erica 819	B/R Easter Tulloch Duch 3269		AGE OF DAM							
Arrow One Erica 646	B/R New Design 323-8212		9							
	Arrow One Evergreen Erica 08									
CED	BW	WW	YW	CEM	MILK	MARB	RE	\$W	\$F	\$B
10	-0.2	45	86	10	26	0.75	0.52	42.74	41.33	121.15

- RATIOS: 96 BW / 104 ADG
- Recommended for heifers

19 Arrow One Commando 740

REG: #18916177 DOB: 1/12/17 TATTOO: 740

EF Commando 1366	EF Complement 8088	Basin Franchise P142	Act BW	Adj IMF
	Riverbend Young Lucy W1470	EF Everelda Entense 6117	79	4.66
		B/R Ambush 28	Adj 205	Adj RE
Arrow One Blackbird 225	Arrow One Rancher 65	Riverbend Young Lucy T1080	780	14.7
	Arrow one Blackbird 019	Kahn Broadband R A 94L	Adj 365	GAIN
		B/R Easter Tulloch Duch 3269	1279	4
		S A V Bismarck 5682	AGE OF DAM	
		Arrow One Blackbird 580	5	

CED	BW	WW	YW	CEM	MILK	MARB	RE	\$W	\$F	\$B
12	-0.4	63	105	13	28	0.49	0.42	64.79	63.06	90.34

- RATIOS: 98 BW / 109 WW / 102 YW / 107 IMF / 105 RE
- Recommended for heifers



Dam of Lot 19

20 Arrow One Commando 742

REG: #18916068 DOB: 1/12/17 TATTOO: 742

EF Commando 1366	EF Complement 8088	Basin Franchise P142	Act BW	Adj IMF
	Riverbend Young Lucy W1470	EF Everelda Entense 6117	71	3.6
		B/R Ambush 28	Adj 205	Adj RE
Arrow One Duchess 543	Arrow One Iron Mountain 142	Riverbend Young Lucy T1080	678	14.6
	Arrow One Duchess 083	S A V Iron Mountain 8066	Adj 365	GAIN
		Arrow One Blackbird 856	1201	4.19
		Arrow One Best Answer 849	AGE OF DAM	
		Arrow One Duchess 714	2	

CED	BW	WW	YW	CEM	MILK	MARB	RE	\$W	\$F	\$B
11	-0.2	52	89	14	24	0.37	0.41	50.43	41.84	67.4

- RATIOS: 98 BW / 103 YW / 106 ADG / 105 RE
- Recommended for heifers

21 Arrow One Commando 743

REG: #18916121 DOB: 1/13/17 TATTOO: 743

EF Commando 1366	EF Complement 8088	Basin Franchise P142	Act BW	Adj IMF
	Riverbend Young Lucy W1470	EF Everelda Entense 6117	78	4.59
		B/R Ambush 28	Adj 205	Adj RE
Arrow One Blackbird 470	Arrow One Long Answer	Riverbend Young Lucy T1080	651	13.6
	Arrow one Blackbird 035	S A V Final Answer 0035	Adj 365	GAIN
		J D H Ethelda 500	1238	4.53
		Arrow One Rancher 65	AGE OF DAM	
		Arrow One Blackbird 418	3	

CED	BW	WW	YW	CEM	MILK	MARB	RE	\$W	\$F	\$B
11	-0.1	49	89	13	24	0.59	0.55	45.59	43.91	98.1

- RATIOS: 100 BW
- Recommended for heifers



22 Arrow One Commando 744

REG: #18916237		DOB: 1/13/17		TATTOO: 744		Act BW	Adj IMF				
EF Commando 1366	EF Complement 8088	Basin Franchise P142	EF Everelda Entense 6117	77	3.97						
	Riverbend Young Lucy W1470	B/R Ambush 28	Riverbend Young Lucy T1080	Adj 205	Adj RE						
Arrow One Blackbird 856	Arrow One Rancher 65	Kahn Broadband R A 94L	B/R Easter Tulloch Duch 3269	731	15.2						
	Arrow One Blackbird 667	Kahn Broadband R A 94L	4 G Erica 221	Adj 365	GAIN						
				1329	4.67						
				AGE OF DAM							
				9							
CED	BW	WW	YW	CEM	MILK	MARB	RE	\$W	\$F	\$B	
13	-0.9	52	86	14	31	0.59	0.57	59.42	36.53	113.94	

- RATIOS: 95 BW / 102 WW / 106 YW / 110 ADG / 109 RE
- Dam is a pathfinder
- Recommended for heifers

23 Arrow One FireStorm 745

REG: #18917538		DOB: 1/13/17		TATTOO: 745		Act BW	Adj IMF				
Quaker Hill Firestorm 3PT1	GAR-EGL Protege	Rito 112 of 2536 Rito 616	L B 6807 Isabel 339	80	3.37						
	QHF Blackcap 6E2 of 4V16 4355	Ideal 4355 of 0T26 2440	QHF Blackcap 4V16 of 1H8	Adj 205	Adj RE						
Arrow One Dixie 31	Arrow One Rancher 124	Arrow One Rancher 65	Arrow One Blackcap 927	679	14.1						
	Arrow One Dixie 913	S A V Final Answer 0035	Arrow One Dixie 47	Adj 365	GAIN						
				1205	3.71						
				AGE OF DAM							
				4							
CED	BW	WW	YW	CEM	MILK	MARB	RE	\$W	\$F	\$B	
9	0.5	54	99	9	26	0.6	0.55	50.18	58.45	119.33	

- RATIOS: 100 BW / 101 RE
- Recommended for heifers



24 Arrow One Basin Payweight 746

REG: #18917349		DOB: 1/14/17		TATTOO: 746		Act BW	Adj IMF				
Basin Payweight 107S	Vermilion Payweight J847	Vermilion Dateline 7078	Vermilion Lass 7969	82	4.79						
	Basin Lucy 3829	C A Future Direction 5321	Basin Lucy 178E	Adj 205	Adj RE						
Arrow One Blackbird 498	Bear Mtn Wagon Master 1002	S A V Pioneer 7301	Stevenson Enchantress 449J	778	14						
	Arrow One Blackbird 20	S A V Iron Mountain 8066	Arrow One Blackbird 590	Adj 365	GAIN						
				1370	5.35						
				AGE OF DAM							
				3							
CED	BW	WW	YW	CEM	MILK	MARB	RE	\$W	\$F	\$B	
3	2.5	67	109	11	23	0.46	0.56	57.89	67.58	144.52	

- RATIOS: 111 WW / 110 YW / 118 ADG / 103 IMF / 104 RE

25 Arrow One FireStorm 750

REG: #18917530	DOB: 1/15/17	TATTOO: 750	Act BW	Adj IMF						
GAR-EGL Protege		Rito 112 of 2536 Rito 616	73	4.09						
Quaker Hill Firestorm 3PT1		L B 6807 Isabel 339	Adj 205	Adj RE						
QHF Blackcap 6E2 of 4V16 4355		Ideal 4355 of 0T26 2440	656	12.7						
Arrow One Rancher 65		QHF Blackcap 4V16 of 1H8	Adj 365	GAIN						
Arrow One Blackcap 46		Kahn Broadband R A 94L	1147	3.96						
Arrow One Blackcap 820		B/R Easter Tulloch Duch 3269	AGE OF DAM							
		S A V Final Answer 0035	3							
		Arrow One Blackcap 533								
CED	BW	WW	YW	CEM	MILK	MARB	RE	\$W	\$F	\$B
12	-1	52	95	11	27	0.49	0.33	52.01	52.59	92.52

- RATIOS: 94 BW
- Recommended for heifers

ARROW ONE ANGUS

\$100 discount for taking bulls home on sale day or...
FREE Wintering until April 1, 2018
FREE Delivery within 150 mile radius

26 Arrow One Full Power 752

REG: #18916004	DOB: 1/16/17	TATTOO: 752	Act BW	Adj IMF						
PA Power Tool 9108		G A R Predestined	75	3.76						
PA Full Power 1208		Shamrocks Beebee Queen 3095	Adj 205	Adj RE						
Pine View SQR Rita W091		G A R New Design 5050	636	13.6						
Arrow One Pride 222		Pine View Rita R084	Adj 365	GAIN						
Arrow one Pride 041		TC Gridiron 258	1106	3.92						
		S A V Iron Mountain 8066	AGE OF DAM							
		S A V Madame Pride 3249	5							
		Gardens Prime Star								
		Arrow One Pride 874								
CED	BW	WW	YW	CEM	MILK	MARB	RE	\$W	\$F	\$B
6	0.6	48	90	8	18	0.76	0.5	36.05	46.38	101.71

- RATIOS: 93 BW
- Recommended for larger heifers

27 Arrow One FireStorm 753

REG: #18917528	DOB: 1/16/17	TATTOO: 753	Act BW	Adj IMF						
GAR-EGL Protege		Rito 112 of 2536 Rito 616	74	4.34						
Quaker Hill Firestorm 3PT1		L B 6807 Isabel 339	Adj 205	Adj RE						
QHF Blackcap 6E2 of 4V16 4355		Ideal 4355 of 0T26 2440	702	12.9						
Arrow One Enchantress 5084		QHF Blackcap 4V16 of 1H8	Adj 365	GAIN						
Bear Mtn Enchantress 9165		Bear Mtn George W 1069	1260	4.86						
		Wk George	AGE OF DAM							
		RF Lassie 71127	2							
		Bear Mtn Freight Train 350L								
		Stevenson Enchantress 449J								
CED	BW	WW	YW	CEM	MILK	MARB	RE	\$W	\$F	\$B
7	1.1	59	105	11	26	0.53	0.3	54.38	65.91	109.93

- RATIOS: 101 BW / 102 WW / 108 YW / 122 ADG
- Recommended for heifers

28 Arrow One Guinness 754

REG: #18916042	DOB: 1/16/17	TATTOO: 754	Act BW	Adj IMF						
Connealy Dublin 8223		Connealy Full Freight	79	4.14						
Connealy Guinness		Black Rina of Conanga 69	Adj 205	Adj RE						
Panda of Conanga 3609		EGL Target 1148	643	13.7						
Arrow One Ruby 352		Ponderra of Conanga 750	Adj 365	GAIN						
Arrow One Ruby 775		S A V Pioneer 7301	1176	4.32						
		S A V Greystone Jannet 5345	AGE OF DAM							
		Boyd New Day 8005	4							
		Arrow One Ruby 44								
CED	BW	WW	YW	CEM	MILK	MARB	RE	\$W	\$F	\$B
5	1.7	49	93	8	23	0.62	0.38	39.62	51.08	93.49

- RATIOS: 99 BW / 102 ADG
- Recommended for heifers



29 Arrow One Guinness 757

REG: #18916099		DOB: 1/18/17		TATTOO: 757		Act BW	Adj IMF					
Connealy Dublin 8223		Connealy Full Freight				78	3.96					
Connealy Guinness		Black Rina of Conanga 69				Adj 205	Adj RE					
Panda of Conanga 3609		EGL Target 1148				763	12.9					
Arrow One Rancher 65		Kahn Broadband R A 94L				Adj 365	GAIN					
Arrow One Blackbird 920		B/R Easter Tulloch Duch 3269				1304	4.38					
Arrow One Blackbird 777		B/R Future Direction 330				AGE OF DAM						
		Arrow One Blackbird 418				8						
CED	BW	WW	YW	CEM	MILK	MARB	RE	\$W	\$F	\$B		
8	0.2	58	105	8	28	0.7	0.3	56.16	66.63	138.89		

- RATIOS: 96 BW / 106 WW / 104 YW / 103 ADG
- Recommended for heifers

30 Arrow One Basin Payweight 761

REG: #18917363		DOB: 1/20/17		TATTOO: 761		Act BW	Adj IMF					
Vermilion Payweight J847		Vermilion Dateline 7078				84	3.72					
Basin Payweight 107S		Vermilion Lass 7969				Adj 205	Adj RE					
Basin Lucy 3829		C A Future Direction 5321				718	13.6					
S A V Iron Mountain 8066		Basin Lucy 178E				Adj 365	GAIN					
Arrow One Young Lucy 11		TC Gridiron 258				1264	4.32					
Arrow One Young Lucy		S A V Madame Pride 3249				AGE OF DAM						
		S A V Final Answer 0035				6						
CED	BW	WW	YW	CEM	MILK	MARB	RE	\$W	\$F	\$B		
4	2	60	95	12	18	0.44	0.58	49.45	47.01	132.92		

- RATIOS: 100 WW / 101 YW / 102 ADG

31 Arrow One Commando 762

REG: #18916168		DOB: 1/21/17		TATTOO: 762		Act BW	Adj IMF					
EF Complement 8088		Basin Franchise P142				83	4.5					
EF Commando 1366		EF Everelda Entense 6117				Adj 205	Adj RE					
Riverbend Young Lucy W1470		B/R Ambush 28				670	14.6					
S Chisum 6175		Riverbend Young Lucy T1080				Adj 365	GAIN					
Arrow One Grace 343		S Alliance 3313				1193	3.96					
Arrow One Grace 712		S Gloria 464				AGE OF DAM						
		ALC Nobleman N01N				4						
CED	BW	WW	YW	CEM	MILK	MARB	RE	\$W	\$F	\$B		
6	2.2	52	93	14	21	0.48	0.42	40.55	48.99	70.95		

- RATIOS: 103 IMF / 104 RE
- Recommended for heifers

32 Arrow One Basin Firestorm 763

REG: #18951848		DOB: 1/21/17		TATTOO: 763		Act BW	Adj IMF					
GAR-EGL Protege		Rito 112 of 2536 Rito 616				75	4.12					
Quaker Hill Firestorm 3PT1		L B 6807 Isabel 339				Adj 205	Adj RE					
QHF Blackcap 6E2 of 4V16 4355		Ideal 4355 of 0T26 2440				689	15					
C C A Emblazon 702		QHF Blackcap 4V16 of 1H8				Adj 365	GAIN					
Arrow One Blackcap 529		O C C Emblazon 854E				AGE OF DAM						
Arrow One Blackcap 9108		Limestone Blackcap R128				2						
CED	BW	WW	YW	CEM	MILK	MARB	RE	\$W	\$F	\$B		
9	1.3	62	114	9	24	0.54	0.35	52.7	80.54	105.08		

- Recommended for heifers

33 Arrow One Full Power 765

REG: #18915987		DOB: 1/21/17		TATTOO: 765		Act BW	Adj IMF					
PA Power Tool 9108		G A R Predestined				80	5.54					
PA Full Power 1208		Shamrocks Beebee Queen 3095				Adj 205	Adj RE					
Pine View SQR Rita W091		G A R New Design 5050				688	12.7					
Connealy Consensus 7229		Pine View Rita R084				Adj 365	GAIN					
Arrow One Blackbird 360		Connealy Consensus				1299	4.97					
Arrow One Blackbird 777		Blue Lilly of Conanga 16				AGE OF DAM						
		B/R Future Direction 330				4						
CED	BW	WW	YW	CEM	MILK	MARB	RE	\$W	\$F	\$B		
5	0.9	54	97	4	24	0.67	0.32	48.41	54.81	103.52		

- RATIOS: 104 YW / 117 ADG / 127 IMF
- Recommended for larger heifers

35 Arrow One Commando 768

REG: #18916170		DOB: 1/21/17		TATTOO: 768		Act BW	Adj IMF					
EF Complement 8088		Basin Franchise P142				80	3.87					
EF Commando 1366		EF Everelda Entense 6117				Adj 205	Adj RE					
Riverbend Young Lucy W1470		B/R Ambush 28				670	14.7					
S A V Platinum 0010		Riverbend Young Lucy T1080				Adj 365	GAIN					
Arrow One Dixie 39		S A V Pioneer 7301				1281	4.76					
Arrow One Dixie 47		S A V Greystone Jannet 5345				AGE OF DAM						
		Boyd New Day 8005				4						
CED	BW	WW	YW	CEM	MILK	MARB	RE	\$W	\$F	\$B		
10	0.3	51	89	13	25	0.51	0.61	49.12	42.53	105.39		

- RATIOS: 102 YW / 112 ADG / 105 RE
- Recommended for heifers

36 Arrow One Commando 770

REG: #18916153		DOB: 1/22/17		TATTOO: 770		Act BW	Adj IMF			
EF Complement 8088		Basin Franchise P142				82	5.71			
EF Commando 1366		EF Everelda Entense 6117				Adj 205	Adj RE			
Riverbend Young Lucy W1470		B/R Ambush 28				705	15.1			
		Riverbend Young Lucy T1080				Adj 365	GAIN			
Connealy Consensus 7229		Connealy Consensus				1246	4.36			
Arrow One Primrose Lady 375		Blue Lilly of Conanga 16				AGE OF DAM				
Arrow One Lady 6102		Arrow One Mentor 412				4				
		4 G Primrose Lady 7108								
CED	BW	WW	YW	CEM	MILK	MARB	RE	\$W	\$F	\$B
8	1.1	52	88	12	24	0.86	0.56	48.84	40.06	103.47

- RATIOS: 103 ADG / 131 IMF / 108 RE
- Recommended for heifers

37 Arrow One FireStorm 772

REG: #18917524		DOB: 1/22/17		TATTOO: 772		Act BW	Adj IMF			
GAR-EGL Protege		Rito 112 of 2536 Rito 616				76	4.45			
Quaker Hill Firestorm 3PT1		L B 6807 Isabel 339				Adj 205	Adj RE			
QHF Blackcap 6E2 of 4V16 4355		Ideal 4355 of 0T26 2440				743	14.2			
		QHF Blackcap 4V16 of 1H8				Adj 365	GAIN			
Connealy Consensus 7229		Connealy Consensus				1225	4.63			
Arrow One Pride 567		Blue Lilly of Conanga 16				AGE OF DAM				
Arrow One Pride Lady 634		W C C Special Design L309				2				
		4 G Blackcap Pride Lady 063								
CED	BW	WW	YW	CEM	MILK	MARB	RE	\$W	\$F	\$B
6	1.8	64	110	8	27	0.54	0.39	59.18	71.59	109.24

- RATIOS: 108 WW / 105 YW / 117 ADG / 102 RE
- Recommended for heifers



39 Arrow One Guinness 775

REG: #18916056		DOB: 1/23/17		TATTOO: 775		Act BW	Adj IMF			
Connealy Dublin 8223		Connealy Full Freight				73	5.28			
Connealy Guinness		Black Rina of Conanga 69				Adj 205	Adj RE			
Panda of Conanga 3609		EGL Target 1148				746	15.8			
		Ponderra of Conanga 750				Adj 365	GAIN			
S A V Iron Mountain 8066		TC Gridiron 258				1389	4.74			
Arrow One Lady 261		S A V Madame Pride 3249				AGE OF DAM				
Arrow One Lady 764		Boyd New Day 8005				5				
		Spring Valley Lady								
CED	BW	WW	YW	CEM	MILK	MARB	RE	\$W	\$F	\$B
5	1.5	58	102	8	22	0.8	0.46	49.34	61.11	145.43

- RATIOS: 90 BW / 104 WW / 111 YW / 112 ADG / 121 IMF / 113 RE
- Recommended for larger heifers

40 Arrow One BrokenBow 778

REG: #18917406		DOB: 1/25/17		TATTOO: 778		Act BW	Adj IMF			
Summitcrest Complete 1P55		C F Right Design 1802				80	5.19			
KM Broken Bow 002		Summitcrest Elba 1M17				Adj 205	Adj RE			
Summitcrest Princess 0P12		Basin Ambush 8161				763	13.6			
		Summitcrest Princess 2J10				Adj 365	GAIN			
Bear Mtn Concensus 3018		Connealy Consensus 7229				1184	3.24			
Arrow One Ideal Lady 5119		Stevenson Enchantress 449J				AGE OF DAM				
BAA Ideal Lady 599A		B A A Sluggo 310A				2				
		Ideal 5112 of WW Rito 1467								
CED	BW	WW	YW	CEM	MILK	MARB	RE	\$W	\$F	\$B
4	1.1	58	97	7	25	0.52	0.34	55.32	52.01	87.4

- RATIOS: 111 WW / 101 YW / 115 IMF
- Recommended for heifers



Dam of Lot 41

41 Arrow One FireStorm 779

REG: #18917539		DOB: 1/26/17		TATTOO: 779		Act BW	Adj IMF			
GAR-EGL Protege		Rito 112 of 2536 Rito 616				85	4.88			
Quaker Hill Firestorm 3PT1		L B 6807 Isabel 339				Adj 205	Adj RE			
QHF Blackcap 6E2 of 4V16 4355		Ideal 4355 of 0T26 2440		QHF Blackcap 4V16 of 1H8		728	13.6			
S A V Bismarck 5682		G A R Grid Maker				Adj 365	GAIN			
J D H Ethelda 212		S A V Abigale 0451				1405	5.05			
J D H Ethelda 500		O C C Legend 616L		U R Ethelda 33N		AGE OF DAM				
						5				
CE	BW	WW	YW	CEM	MILK	MARB	RE	\$W	\$F	\$B
6	2.1	61	105	7	23	0.71	0.56	51.76	64.48	154.12

- RATIOS: 101 WW / 112 YW / 119 ADG / 112 IMF
- Recommended for heifers



42

42 Arrow One Full Power 780

REG: #18916001		DOB: 1/26/17		TATTOO: 780		Act BW	Adj IMF			
PA Power Tool 9108		G A R Predestined				76	3.86			
PA Full Power 1208		Shamrocks Beebee Queen 3095				Adj 205	Adj RE			
Pine View SQR Rita W091		G A R New Design 5050		Pine View Rita R084		720	15.9			
S Chisum 6175		S Alliance 3313				Adj 365	GAIN			
Arrow One Blkcp Bessie 279		S Gloria 464				1371	5.07			
Arrow One Nobleman 721		ALC Nobleman N01N		Andora Blkcp Bessie 1146		AGE OF DAM				
						5				
CE	BW	WW	YW	CEM	MILK	MARB	RE	\$W	\$F	\$B
4	1.2	55	97	8	23	0.51	0.52	48.46	54.11	114.48

- RATIOS: 94 BW / 100 WW / 109 YW / 119 ADG / 114 RE



Dam of Lot 43

43 Arrow One Commando 781

REG: #18916236		DOB: 1/26/17		TATTOO: 781		Act BW	Adj IMF			
EF Complement 8088		Basin Franchise P142				80	3.4			
EF Commando 1366		EF Everelda Entense 6117				Adj 205	Adj RE			
Riverbend Young Lucy W1470		B/R Ambush 28		Riverbend Young Lucy T1080		717	12.5			
Arrow One Rancher 65		Kahn Broadband R A 94L				Adj 365	GAIN			
Arrow One Grace 85		B/R Easter Tulloch Duch 3269				1034	2.59			
Arrow One Grace 680		Arrow One Ambush 3051		Arrow One Grace 430		AGE OF DAM				
						9				
CE	BW	WW	YW	CEM	MILK	MARB	RE	\$W	\$F	\$B
10	-0.3	52	88	13	28	0.66	0.37	54.94	46.34	81.7

- RATIOS: 99 BW
- Recommended for heifers

44 Arrow One FireStorm 782

REG: #18917547		DOB: 1/26/17		TATTOO: 782						
Quaker Hill Firestorm 3PT1	GAR-EGL Protege	Rito 112 of 2536 Rito 616	Act BW	75	Adj IMF	4.55				
	QHF Blackcap 6E2 of 4V16 4355	L B 6807 Isabel 339	Adj 205	682	Adj RE	12.5				
Arrow One Erica 219	Arrow One Rancher 65	Kahn Broadband R A 94L	Adj 365	1164	GAIN	3.85				
	Arrow One Miss Erica 574	B/R Easter Tulloch Duch 3269	AGE OF DAM		5					
	Arrow One Ambush 3051	4 G Miss Erica 823								
CED	BW	WW	YW	CEM	MILK	MARB	RE	\$W	\$F	\$B
11	-0.9	53	96	11	27	0.72	0.41	52.99	53.7	124.81

- RATIOS: 93 BW / 105 IMF
- Recommended for heifers



45 Arrow One Guinness 783

REG: #18916012		DOB: 1/28/17		TATTOO: 783						
Connealy Guinness	Connealy Dublin 8223	Connealy Full Freight	Act BW	77	Adj IMF	4.18				
	Panda of Cononga 3609	Black Rina of Cononga 69	Adj 205	684	Adj RE	13.4				
Arrow One Proud Lassie 5121	Bear Mtn Wagon Master 1002	EGL Target 1148	Adj 365	1126	GAIN	3.58				
	A 1 Proud Lassie	Ponderra of Cononga 750	AGE OF DAM		2					
	S A V Pioneer 7301	Stevenson Enchantress 449J								
	GDAR SVF Traveler 234D	Proud Lassie								
CED	BW	WW	YW	CEM	MILK	MARB	RE	\$W	\$F	\$B
4	2.2	44	80	7	26	0.52	0.14	38.69	31.44	67.77

- Recommended for heifers

46 Arrow One Commando 784

REG: #18916054		DOB: 1/28/17		TATTOO: 784						
EF Commando 1366	EF Complement 8088	Basin Franchise P142	Act BW	75	Adj IMF	4.8				
	Riverbend Young Lucy W1470	EF Everelda Entense 6117	Adj 205	684	Adj RE	14.1				
Arrow One Duchess 581	V A R Reserve 1111	B/R Ambush 28	Adj 365	1148	GAIN	3.75				
	B/R Easter Tulloch Duch 3269	Riverbend Young Lucy T1080	AGE OF DAM		2					
	B/R New Day 454	Sandpoint Blackbird 8809								
	B/R Recovery 980	B/R Easter Tulloch Duch 028								
CED	BW	WW	YW	CEM	MILK	MARB	RE	\$W	\$F	\$B
10	0.2	49	85	12	28	0.49	0.37	50.77	36.81	64.56

- RATIOS: 107 IMF / 101 RE
- Recommended for heifers

47 Arrow One Commando 785

REG: #18916057		DOB: 1/28/17		TATTOO: 785						
EF Commando 1366	EF Complement 8088	Basin Franchise P142	Act BW	78	Adj IMF	4.24				
	Riverbend Young Lucy W1470	EF Everelda Entense 6117	Adj 205	731	Adj RE	13.1				
Arrow One Blackcap 5109	Bear Mtn Concensus 3018	B/R Ambush 28	Adj 365	1198	GAIN	3.81				
	Wical Blackcap 214	Riverbend Young Lucy T1080	AGE OF DAM		2					
	Connealy Consensus 7229	Stevenson Enchantress 449J								
	Baldrige Joaquin 136J	Wical Blackcap 053								
CED	BW	WW	YW	CEM	MILK	MARB	RE	\$W	\$F	\$B
8	1.3	55	90	11	28	0.43	0.31	56.28	41.55	70.16

- RATIOS: 106 WW / 102 YW
- Recommended for heifers

48 Arrow One Commando 786

REG: #18916112		DOB: 1/4/17		TATTOO: 786						
EF Commando 1366	EF Complement 8088	Basin Franchise P142	Act BW	70	Adj IMF	4.11				
	Riverbend Young Lucy W1470	EF Everelda Entense 6117	Adj 205	614	Adj RE	14				
Arrow One Blackcap 5100	K C F Bennett Absolute	B/R Ambush 28	Adj 365	1156	GAIN	4.48				
	Bear Mtn Blackcap 3164	Riverbend Young Lucy T1080	AGE OF DAM		2					
	S A V Final Answer 0035	Thomas Miss Lucy 5152								
	PA Power Tool 9108	Bear Mtn Blackcap 8046								
CED	BW	WW	YW	CEM	MILK	MARB	RE	\$W	\$F	\$B
12	-0.2	47	83	12	23	0.42	0.37	44.12	34.66	58.02

- RATIOS: 96 BW / 113 ADG / 101 RE
- Recommended for heifers

49 Arrow One Commando 791

REG: #18916222		DOB: 1/31/17		TATTOO: 791						
EF Complement 8088	Basin Franchise P142	Act BW	Adj IMF							
EF Commando 1366	EF Everelda Entense 6117	75	4.36							
Riverbend Young Lucy W1470	B/R Ambush 28	Adj 205	Adj RE							
	Riverbend Young Lucy T1080	688	15							
S Chisum 6175	S Alliance 3313	Adj 365	GAIN							
Arrow One Blackcap 137	S Gloria 464	1242	4.27							
Arrow One Blackbird 590	Arrow One Ambush 3051	AGE OF DAM								
	Wical Blackcap 214	6								
CED	BW	WW	YW	CEM	MILK	MARB	RE	\$W	\$F	\$B
9	0.4	53	87	14	26	0.64	0.64	53.93	37.61	120.06

- RATIOS: 93 BW / 100 ADG / 100 IMF / 107 RE
- Recommended for heifers

51 Arrow One Guinness 797

REG: #18916109		DOB: 2/2/17		TATTOO: 797						
Connealy Dublin 8223	Connealy Full Freight	Act BW	Adj IMF							
Connealy Guinness	Black Rina of Conanga 69	70	4.9							
Panda of Conanga 3609	EGL Target 1148	Adj 205	Adj RE							
	Ponderra of Conanga 750	707	12.2							
ALC Nobleman N01N	B/R New Frontier 095	Adj 365	GAIN							
Arrow One Evelyn 78	ALC LYN T03L	1177	3.62							
Arrow One Evelyn 318	4 G 234D Traveler 132	AGE OF DAM								
	4 G Evelyn 028	10								
CED	BW	WW	YW	CEM	MILK	MARB	RE	\$W	\$F	\$B
1	3	58	105	8	27	0.88	0.28	48.1	66.63	120.42

- RATIOS: 96 BW / 113 IMF
- Dam is a pathfinder



52 Arrow One Guinness 7100

REG: #18916091		DOB: 2/5/17		TATTOO: 7100						
Connealy Dublin 8223	Connealy Full Freight	Act BW	Adj IMF							
Connealy Guinness	Black Rina of Conanga 69	74	6.55							
Panda of Conanga 3609	EGL Target 1148	Adj 205	Adj RE							
	Ponderra of Conanga 750	768	11.7							
S A V Bismarck 5682	G A R Grid Maker	Adj 365	GAIN							
Arrow one Erica 07	S A V Abigale 0451	1333	4.34							
Arrow One Erica 646	B/R New Design 323-8212	AGE OF DAM								
	Arrow One Evergreen Erica 08	7								
CED	BW	WW	YW	CEM	MILK	MARB	RE	\$W	\$F	\$B
8	0	58	99	10	25	0.96	0.2	56.16	55.63	134.06

- RATIOS: 91 BW / 107 WW / 106 YW / 102 ADG / 151 IMF
- Recommended for heifers

53 Arrow One Basin Paywght7106

REG: #18917355		DOB: 2/6/17		TATTOO: 7106						
Vermilion Payweight J847	Vermilion Dateline 7078	Act BW	Adj IMF							
Basin Payweight 107S	Vermilion Lass 7969	83	6.09							
Basin Lucy 3829	C A Future Direction 5321	Adj 205	Adj RE							
	Basin Lucy 178E	723	13.3							
EXAR Upshot 0562B	Sitz Upward 307R	Adj 365	GAIN							
Arrow One Blackcap 48a	EXAR Barbara T020	1297	4.65							
Wical Blackcap 214	Baldridge Joaquin 136J	AGE OF DAM								
	Wical Blackcap 053	3								
CED	BW	WW	YW	CEM	MILK	MARB	RE	\$W	\$F	\$B
3	2.7	60	103	10	23	0.62	0.56	49.08	61.52	143.64

- RATIOS: 103 WW / 104 YW / 102 ADG / 132 IMF

54 Arrow One Payweight 7109

REG: #18951846		DOB: 2/8/17		TATTOO: 7109		Act BW	Adj IMF			
Basin Payweight 107S	Vermilion Payweight J847	Vermilion Dateline 7078	80	4.85						
	Basin Lucy 3829	Vermilion Lass 7969	Adj 205	Adj RE						
		C A Future Direction 5321	716	13.8						
Arrow One Erica 26	S A V Iron Mountain 8066	TC Gridiron 258	Adj 365	GAIN						
	Arrow one Erica 020	S A V Madame Pride 3249	1282	3.94						
		Gardens Prime Star	AGE OF DAM							
	Arrow One Erica 637		5							
CED	BW	WW	YW	CEM	MILK	MARB	RE	\$W	\$F	\$B
5	1.9	59	101	12	15	NA	NA	42.14	58.57	NA

- RATIOS: 99 BW

55 Arrow One FireStorm 7112

REG: #18917545		DOB: 2/10/17		TATTOO: 7112		Act BW	Adj IMF			
Quaker Hill Firestorm 3PT1	GAR-EGL Protege	Rito 112 of 2536 Rito 616	76	4.03						
	QHF Blackcap 6E2 of 4V16 4355	L B 6807 Isabel 339	Adj 205	Adj RE						
		Ideal 4355 of 0T26 2440	691	13.3						
Arrow One Mist 226	Arrow One Long Answer	QHF Blackcap 4V16 of 1H8	Adj 365	GAIN						
	Arrow one Mist 046	S A V Final Answer 0035	1155	3.73						
		J D H Ethelda 500	AGE OF DAM							
	HA Program 5652	5								
	Arrow One MIST 884		5							
CED	BW	WW	YW	CEM	MILK	MARB	RE	\$W	\$F	\$B
10	0.1	59	104	10	24	0.48	0.37	54.37	64.07	99.62

- RATIOS: 94 BW
- Recommended for heifers

56 Arrow One Basin Payweight 7113

REG: #18917352		DOB: 2/10/17		TATTOO: 7113		Act BW	Adj IMF			
Basin Payweight 107S	Vermilion Payweight J847	Vermilion Dateline 7078	82	4.77						
	Basin Lucy 3829	Vermilion Lass 7969	Adj 205	Adj RE						
		C A Future Direction 5321	699	13.2						
Arrow One Blackcap 483	Connealy Consensus 7229	Basin Lucy 178E	Adj 365	GAIN						
	Arrow One Blackcap 853	Connealy Consensus	1232	4.44						
		Blue Lilly of Conanga 16	AGE OF DAM							
	ALC Nobleman N01N	3								
	Andora Blackcap 7115		3							
CED	BW	WW	YW	CEM	MILK	MARB	RE	\$W	\$F	\$B
1	3.3	56	97	10	21	0.57	0.64	41.32	53.41	139

- RATIOS: 103 IMF

57 Arrow One Commando 7119

REG: #18916129		DOB: 2/13/17		TATTOO: 7119		Act BW	Adj IMF			
EF Commando 1366	EF Complement 8088	Basin Franchise P142	79	4.92						
	Riverbend Young Lucy W1470	EF Everelda Entense 6117	Adj 205	Adj RE						
		B/R Ambush 28	652	12.6						
Arrow One Erica 482	Arrow One Rancher 65	Riverbend Young Lucy T1080	Adj 365	GAIN						
	Arrow One Miss Erica 574	Kahn Broadband R A 94L	1188	4.61						
		B/R Easter Tulloch Duch 3269	AGE OF DAM							
	Arrow One Ambush 3051	3								
	4 G Miss Erica 823		3							
CED	BW	WW	YW	CEM	MILK	MARB	RE	\$W	\$F	\$B
10	-0.1	45	80	13	27	0.48	0.32	46.1	30.77	72.33

- RATIOS: 101 ADG / 106 IMF
- Recommended for heifers

58 Arrow One S Dakota 7120

REG: #18915029		DOB: 2/13/17		TATTOO: 7120		Act BW	Adj IMF			
Kraye South Dakota JK 5126	Mohnen South Dakota 402	Mohnen Density 730	81	4.99						
	Miss Burgess JK 9268	Mohnen Jilt 539	Adj 205	Adj RE						
		S A V Final Answer 0035	723	13.7						
Arrow One Blackbird 956	S A V Final Answer 0035	Miss Burgess JK 7348	Adj 365	GAIN						
	Riverbend Blackbird 3098	Sitz Traveler 8180	1272	4.77						
		S A V Emulous 8145	AGE OF DAM							
	Bon View Bando 598	8								
	Blackbird of S V F 1429		8							
CED	BW	WW	YW	CEM	MILK	MARB	RE	\$W	\$F	\$B
6	1.4	61	101	7	27	0.5	0.4	59.71	57.15	131.41

- RATIOS: 103 WW / 102 YW / 105 ADG / 108 IMF / 101 RE
- Dam is a pathfinder

59 Arrow One S Dakota 7126

REG: #18915032		DOB: 2/19/17		TATTOO: 7126		Act BW	Adj IMF			
Kraye South Dakota JK 5126	Mohnen South Dakota 402	Mohnen Density 730	80	3.8						
	Miss Burgess JK 9268	Mohnen Jilt 539	Adj 205	Adj RE						
		S A V Final Answer 0035	713	14						
Arrow One Enchantress 75	B/R Future Direction 330	Miss Burgess JK 7348	Adj 365	GAIN						
	Arrow One Enchantress 49	C A Future Direction 5321	1204	3.89						
		B/R Blackcap Empress 76	AGE OF DAM							
	Boyd New Day 8005	10								
	Wical Enchantress 216		10							
CED	BW	WW	YW	CEM	MILK	MARB	RE	\$W	\$F	\$B
5	1.7	59	95	6	24	0.45	0.44	55.36	47.71	108.48

- RATIOS: 102 WW / 104 RE



60 Arrow One Payweight 541-7127

REG: #18915033	DOB: 2/19/17	TATTOO: 7127	Act BW	Adj IMF								
Basin Payweight 107S	Vermilion Payweight J847	78	4.2									
Arrow One Payweight 541	Basin Lucy 3829	Adj 205	Adj RE									
A 1 Blackcap 313	Dalebanks Extender 6012	745	14.3									
	A 1 Blackcap 11	Adj 365	GAIN									
S A V Platinum 0010	S A V Pioneer 7301	1326	4.46									
Arrow One Miss Erica 434	S A V Greystone Jannet 5345	AGE OF DAM										
Arrow One Miss Erica 175	S A V Final Answer 0035	3										
	Arrow One Miss Erica 574	CED	BW	WW	YW	CEM	MILK	MARB	RE	\$W	\$F	\$B
		6	0.9	60	101	12	23	NA	NA	54.95	57.86	NA

• RATIOS: 106 WW

61 Arrow One S Dakota 7129

REG: #18915035	DOB: 2/21/17	TATTOO: 7129	Act BW	Adj IMF								
Mohnen South Dakota 402	Mohnen Density 730	84	4.4									
Kraye South Dakota JK 5126	Mohnen Jilt 539	Adj 205	Adj RE									
Miss Burgess JK 9268	S A V Final Answer 0035	712	14									
	Miss Burgess JK 7348	Adj 365	GAIN									
Connealy Consensus 7229	Connealy Consensus	NA	4.12									
Arrow One Blackbird 379	Blue Lilly of Conanga 16	AGE OF DAM										
Arrow One Blackbird 667	Kahn Broadband R A 94L	4										
	4 G Erica 221	CED	BW	WW	YW	CEM	MILK	MARB	RE	\$W	\$F	\$B
		4	2.2	61	100	5	25	0.59	0.37	55.66	55.33	114.44

• RATIOS: 101 WW / 104 RE

62 Arrow One Concensus 7130

REG: #18915048	DOB: 2/22/17	TATTOO: 7130	Act BW	Adj IMF								
Connealy Consensus 7229	Connealy Consensus	73	5.28									
Bear Mtn Concensus 3018	Blue Lilly of Conanga 16	Adj 205	Adj RE									
Stevenson Enchantress 449J	Frontier 627C of Mill Brae	679	13.1									
	Stevenson Enchantress 4996	Adj 365	GAIN									
Arrow One Genesis 734	B/R 65R Genesis	1113	3.36									
Arrow One Blackcap 9108	DCF 0061 234D 411	AGE OF DAM										
Arrow One Blackcap 533	B/R New Design 036	8										
	B/R Lantz Blackcap 792	CED	BW	WW	YW	CEM	MILK	MARB	RE	\$W	\$F	\$B
		7	0.8	49	83	10	25	0.7	0.42	47.76	33.3	89.03

• RATIOS: 90 BW / 114 IMF

63 Arrow One Payweight 541-7133

REG: #18915038	DOB: 2/25/17	TATTOO: 7133	Act BW	Adj IMF								
Basin Payweight 107S	Vermilion Payweight J847	79										
Arrow One Payweight 541	Basin Lucy 3829	Adj 205	Adj RE									
A 1 Blackcap 313	Dalebanks Extender 6012	658	12									
	A 1 Blackcap 11	Adj 365	GAIN									
Arrow One Rancher 65	Kahn Broadband R A 94L	NA	4.12									
Arrow One Blackbird 486	B/R Easter Tulloch Duch 3269	AGE OF DAM										
Arrow One Blackbird 956	S A V Final Answer 0035	3										
	Riverbend Blackbird 3098	CED	BW	WW	YW	CEM	MILK	MARB	RE	\$W	\$F	\$B
		7	0.7	47	85	11	26	NA	NA	44.93	38.18	NA

64 Arrow One Concensus 7135

REG: #18915047		DOB: 2/25/17		TATTOO: 7135		Act BW	Act IMF			
Bear Mtn Concensus 3018	Connealy Concensus 7229	Connealy Concensus	83	3.89						
	Blue Lilly of Conanga 16	Blue Lilly of Conanga 16	Adj 205	Act RE						
	Stevenson Enchantress 449J	Frontier 627C of Mill Brae	727	12						
J D H Ethelda 216	S A V Bismarck 5682	G A R Grid Maker	Adj 365	GAIN						
	S A V Abigale 0451	S A V Abigale 0451	1236	3.81						
	J D H Ethelda 500	O C C Legend 616L	AGE OF DAM		5					
	U R Ethelda 33N									
CED	BW	WW	YW	CEM	MILK	MARB	RE	\$W	\$F	\$B
5	2.4	54	90	11	24	NA	NA	47.44	42.24	NA

- RATIOS: 104 WW
- Recommended for heifers

65 Arrow One S Dakota 7136

REG: #18915046		DOB: 2/28/17		TATTOO: 7136		Act BW	Act IMF			
Kraye South Dakota JK 5126	Mohnen South Dakota 402	Mohnen Density 730	70	3.86						
	Mohnen Jilt 539	Mohnen Jilt 539	Adj 205	Act RE						
	Miss Burgess JK 9268	S A V Final Answer 0035	744	13.4						
Arrow One Blackbird 231	S Chisum 6175	S Alliance 3313	Adj 365	GAIN						
	S Gloria 464	S Gloria 464	1250	3.86						
	Arrow One Blackbird 856	Arrow One Rancher 65	AGE OF DAM		5					
	Arrow One Blackbird 667									
CED	BW	WW	YW	CEM	MILK	MARB	RE	\$W	\$F	\$B
10	-0.5	66	105	11	28	0.46	0.45	69.54	60.92	135.81

- RATIOS: 86 BW / 106 WW
- Dam is a pathfinder

66 Arrow One Payweight 541-7139

REG: #18915043		DOB: 2/28/17		TATTOO: 7139		Act BW	Act IMF			
Arrow One Payweight 541	Basin Payweight 107S	Vermilion Payweight J847	77	3.55						
	A 1 Blackcap 313	Basin Lucy 3829	Adj 205	Act RE						
		Dalebanks Extender 6012	686	11.9						
Arrow One Duchess 451	S Chisum 6175	S Alliance 3313	Adj 365	GAIN						
	S Gloria 464	S Gloria 464	11.80	2.75						
	Arrow One Duchess 114	S A V Iron Mountain 8066	AGE OF DAM		3					
	B/R Easter Tulloch Duch 3269									
CED	BW	WW	YW	CEM	MILK	MARB	RE	\$W	\$F	\$B
4	2.3	57	98	12	22	NA	NA	46.91	54.52	NA

- RATIOS: 99 BW

67 Arrow One Payweight 541-7141

REG: #18915041		DOB: 3/1/17		TATTOO: 7141		Act BW	Act IMF			
Arrow One Payweight 541	Basin Payweight 107S	Vermilion Payweight J847	80	2.5						
	A 1 Blackcap 313	Basin Lucy 3829	Adj 205	Act RE						
		Dalebanks Extender 6012	693	12.2						
Arrow One Erica 86	S A V Final Answer 0035	Sitz Traveler 8180	Adj 365	GAIN						
	S A V Emulous 8145	S A V Emulous 8145	1223	4.19						
	Arrow One Erica 461	B/R New Design 036	AGE OF DAM		9					
	B/R Enchantress T Erica 2276									
CED	BW	WW	YW	CEM	MILK	MARB	RE	\$W	\$F	\$B
8	0.5	49	83	11	25	0.44	0.51	48.23	33.3	109.28

- RATIOS: 99 BW

68 Arrow One S Dakota 7142

REG: #18915042		DOB: 3/1/17		TATTOO: 7142		Act BW	Act IMF			
Kraye South Dakota JK 5126	Mohnen South Dakota 402	Mohnen Density 730	81	4.64						
	Mohnen Jilt 539	Mohnen Jilt 539	Adj 205	Adj RE						
	Miss Burgess JK 9268	S A V Final Answer 0035	765	13.4						
Bear Mtn Miss Manor 300	Connealy Concensus 7229	Connealy Concensus	Adj 365	GAIN						
	Blue Lilly of Conanga 16	Blue Lilly of Conanga 16	1319	4.06						
	BS Miss Foresight 235W	Woodhill Foresight	AGE OF DAM		4					
	Ox Bow Manor 235									
CED	BW	WW	YW	CEM	MILK	MARB	RE	\$W	\$F	\$B
6	1.4	67	108	6	27	0.66	0.42	65.86	65.73	130.87

- RATIOS: 109 WW



69 Arrow One Concensus 7144

REG: #18915050		DOB: 3/5/17		TATTOO: 7144		Act BW	Act IMF			
Connealy Consensus 7229		Connealy Consensus Blue Lilly of Conanga 16		80	5.35					
Bear Mtn Concensus 3018		Frontier 627C of Mill Brae Stevenson Enchantress 4996		Adj 205	Act RE					
Stevenson Enchantress 449J		B/R New Frontier 095 ALC LYN T03L		753	12.4					
ALC Nobleman N01N		B/R Recovery 980 B/R Easter Tulloch Duch 028		Adj 365	GAIN					
Arrow One Duchess 714				1308	4.45					
B/R Easter Tulloch Duch 3269										
AGE OF DAM										
10										
CED	BW	WW	YW	CEM	MILK	MARB	RE	\$W	\$F	\$B
6	1.2	52	88	10	29	0.62	0.32	53.56	40.06	113.5

• RATIOS: 107 WW

70 Arrow One S Dakota 7146

REG: #18915052		DOB: 3/5/17		TATTOO: 7146		Act BW	Act IMF			
Mohnen South Dakota 402		Mohnen Density 730 Mohnen Jilt 539		84	3.37					
Kraye South Dakota JK 5126		S A V Final Answer 0035 Miss Burgess JK 7348		Adj 205	Act RE					
Miss Burgess JK 9268		Cole Creek Cedar Ridge 1V Cole Creek Black Cedar 46P Cole Creek Clovanada 49S		752	13.3					
Cole Creek Cedar Ridge 1V		S A V Final Answer 0035 Arrow One Blackbird 418		Adj 365	GAIN					
Arrow One Blackbird 338				1341	4.39					
Arrow One Blackbird 826										
AGE OF DAM										
4										
CED	BW	WW	YW	CEM	MILK	MARB	RE	\$W	\$F	\$B
6	1.5	63	105	6	27	0.5	0.33	60.81	63.06	111.41

• RATIOS: 107 WW

71 Arrow One Concensus 7150

REG: #18915055		DOB: 3/8/17		TATTOO: 7150		Act BW	Act IMF			
Connealy Consensus 7229		Connealy Consensus Blue Lilly of Conanga 16		84	4.34					
Bear Mtn Concensus 3018		Frontier 627C of Mill Brae Stevenson Enchantress 4996		Adj 205	Act RE					
Stevenson Enchantress 449J		Arrow One Ranchhand 827 Arrow One Rancher 65 Arrow One Dixie 47		768	12.8					
Arrow One Ranchhand 827		Boyd New Day 8005 A 1 Blackcap 313		Adj 365	GAIN					
Arrow One Blackcap 088				1371	4.41					
Arrow One Blackcap 674										
AGE OF DAM										
7										
CED	BW	WW	YW	CEM	MILK	MARB	RE	\$W	\$F	\$B
3	2.5	59	102	6	28	0.46	0.37	53.62	60.4	107.09

• RATIOS: 109 WW

72 Arrow One S Dakota 7159

REG: #18915061		DOB: 3/12/17		TATTOO: 7159		Act BW	Act IMF			
Mohnen South Dakota 402		Mohnen Density 730 Mohnen Jilt 539		81	3.91					
Kraye South Dakota JK 5126		S A V Final Answer 0035 Miss Burgess JK 7348		Adj 205	Act RE					
Miss Burgess JK 9268		A A R Really Windy 1205 VDAR Blackbird 2031		699	11.8					
V D A R Really Windy 4097		Alberda Traveler 416 Andora Blkcp Empress 1106		Adj 365	GAIN					
Arrow One Empress 233				NA	4.51					
Arrow One Blackcap Empress02										
AGE OF DAM										
5										
CED	BW	WW	YW	CEM	MILK	MARB	RE	\$W	\$F	\$B
5	1.9	62	100	7	18	NA	NA	50.7	54.63	NA

• RATIOS: 107 WW



73 Arrow One Payweight 541-7132

REG: #18915037		DOB: 2/23/17		TATTOO: 7132		Act BW	Adj IMF			
Basin Payweight 107S		Vermilion Payweight J847 Basin Lucy 3829		78	4.07					
Arrow One Payweight 541		Dalebanks Extender 6012 A 1 Blackcap 11		Adj 205	Act RE					
A 1 Blackcap 313		S A V Pioneer 7301 S A V Greystone Jannet 5345		730	13.6					
S A V Platinum 0010		Arrow One Rancher 65 Arrow One Pride 640		Adj 365	GAIN					
Arrow One Pride 439				1199	3.8					
Arrow One Pride 874										
AGE OF DAM										
3										
CED	BW	WW	YW	CEM	MILK	MARB	RE	\$W	\$F	\$B
5	1.3	53	94	7	22	0.17	0.38	45.43	50.09	77.36

• RATIOS: 104 WW / 101 RE

Angus Sale Heifers



75 Arrow One Grace 73

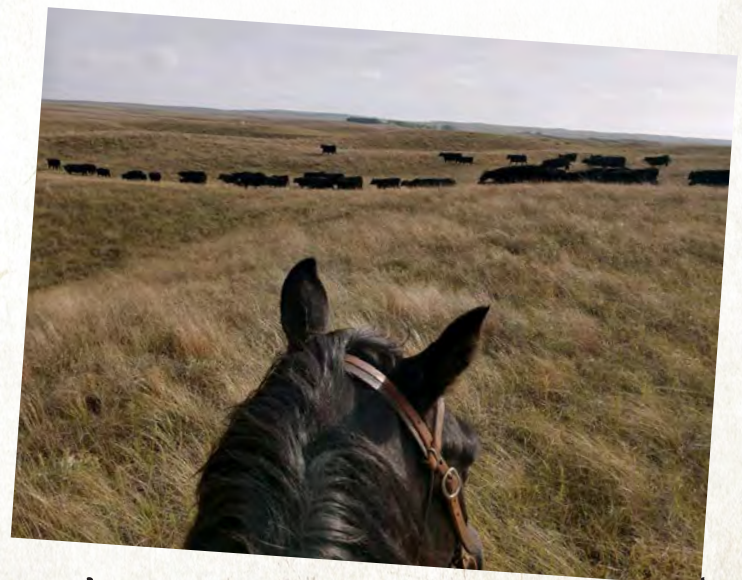
REG: #18917408		DOB: 1/1/17		TATTOO: 73							
Summitcrest Complete 1P55		C F Right Design 1802		Summitcrest Elba 1M17		Act BW					
KM Broken Bow 002		Summitcrest Princess 0P12		Basin Ambush 8161		73					
Bear Mtn Concensus 3018		Summitcrest Princess 2J10		Connealy Consensus 7229		Adj 205					
Arrow One Grace 5107		Stevenson Enchantress 449J		Gardens Prime Star		539					
Arrow one Grace 047		Arrow One Grace 85		AGE OF DAM		2					
CED	BW	WW	YW	CEM	MILK	MARB	RE	\$W	\$F	\$B	
9	0.6	51	88	12	23	NA	NA	47.04	40.75	NA	

76 Arrow One Erica 74

REG: #18915021		DOB: 1/1/17		TATTOO: 74							
EF Complement 8088		Basin Franchise P142		EF Everelda Entense 6117		Act BW					
EF Commando 1366		B/R Ambush 28		Riverbend Young Lucy T1080		69					
Riverbend Young Lucy W1470		S Alliance 3313		S Gloria 464		Adj 205					
S Chisum 6175		S A V Bismarck 5682		Arrow One Erica 646		583					
Arrow One Erica 535		Arrow one Erica 07		AGE OF DAM		2					
CED	BW	WW	YW	CEM	MILK	MARB	RE	\$W	\$F	\$B	
9	1	59	97	14	24	NA	NA	56.01	51.31	NA	

77 Arrow One Duchess 713

REG: #18915022		DOB: 1/4/17		TATTOO: 713							
Vermilion Payweight J847		Vermilion Dateline 7078		Vermilion Lass 7969		Act BW					
Basin Payweight 107S		C A Future Direction 5321		Basin Lucy 178E		68					
Basin Lucy 3829		TC Gridiron 258		S A V Madame Pride 3249		Adj 205					
S A V Iron Mountain 8066		B/R Recovery 980		B/R Easter Tulloch Duch 028		639					
Arrow One Duchess 114		B/R Easter Tulloch Duch 3269		AGE OF DAM		6					
CED	BW	WW	YW	CEM	MILK	MARB	RE	\$W	\$F	\$B	
8	0.3	55	95	13	18	0.49	0.51	45.29	50.49	133.37	





78 Arrow One Pride 735

REG: #18915027		DOB: 1/11/17		TATTOO: 735						
Vermilion Payweight J847		Vermilion Dateline 7078		Act BW						
Basin Payweight 107S		Vermilion Lass 7969		68						
Basin Lucy 3829		C A Future Direction 5321		Adj 205						
Arrow One Chisim 265		Basin Lucy 178E		537						
Arrow One Pride 4116		S Chisum 6175		AGE OF DAM						
Arrow one Pride 041		Arrow One Duchess 083		3						
Gardens Prime Star		Arrow One Pride 874								
CED	BW	WW	YW	CEM	MILK	MARB	RE	\$W	\$F	\$B
8	0.8	51	87	14	19	NA	NA	42.84	38.98	NA



79 Arrow One Grace 759

REG: #18915980		DOB: 1/18/17		TATTOO: 759						
PA Power Tool 9108		G A R Predestined		Act BW						
PA Full Power 1208		Shamrocks Beebee Queen 3095		75						
Pine View SQR Rita W091		G A R New Design 5050		Adj 205						
S A V Platinum 0010		Pine View Rita R084		605						
Arrow One Grace 480		S A V Pioneer 7301		AGE OF DAM						
Arrow One Grace 85		S A V Greystone Jannet 5345		3						
Arrow One Rancher 65		Arrow One Grace 680								
CED	BW	WW	YW	CEM	MILK	MARB	RE	\$W	\$F	\$B
6	0.4	60	103	7	26	0.76	0.61	57.9	61.52	135.78

80 Arrow One Ethelda 774

REG: #18916073		DOB: 1/23/17		TATTOO: 774						
EF Complement 8088		Basin Franchise P142		Act BW						
EF Commando 1366		EF Everelda Entense 6117		65						
Riverbend Young Lucy W1470		B/R Ambush 28		Adj 205						
S A V Platinum 0010		Riverbend Young Lucy T1080		583						
Arrow one Ethelda 517		S A V Pioneer 7301		AGE OF DAM						
J D H Ethelda 216		S A V Greystone Jannet 5345		2						
S A V Bismarck 5682		J D H Ethelda 500								
CED	BW	WW	YW	CEM	MILK	MARB	RE	\$W	\$F	\$B
12	-0.2	58	96	14	25	NA	NA	57.76	50.20	NA

81 Arrow One Lg Blackbird 792

REG: #18916101		DOB: 2/1/17		TATTOO: 792							
Connealy Dublin 8223		Connealy Full Freight		Black Rina of Conanga 69		Act BW		75			
Connealy Guinness		EGL Target 1148		Ponderra of Conanga 750		Adj 205		615			
Panda of Conanga 3609		Connealy Forefront		TC Pride 8067		AGE OF DAM		9			
TC Foreman 016		Famous 7001		Vaf Vantage Blackbird 692							
LaGrand Blackbird 8156											
LaGrand Blackbird 4749											
CED	BW	WW	YW	CEM	MILK	MARB	RE	\$W	\$F	\$B	
4	1.3	48	87	10	22	0.75	0.25	40.36	41.04	108.89	

82 Arrow One Lg Lady 793

REG: #18917370		DOB: 2/1/17		TATTOO: 793							
Vermilion Payweight J847		Vermilion Dateline 7078		Vermilion Lass 7969		Act BW		70			
Basin Payweight 107S		C A Future Direction 5321		Basin Lucy 178E		Adj 205		672			
Basin Lucy 3829		Leachman Right Time		Hyline Right Time 338		AGE OF DAM		2			
Hyline Right Time 338		Famous 7001		Donamere Lady 2743							
LaGrand Lady 5460											
LaGrand Lady 2583											
CED	BW	WW	YW	CEM	MILK	MARB	RE	\$W	\$F	\$B	
7	1.3	55	91	10	22	0.41	0.5	49.33	43.33	126.54	

83 Arrow One Blackcap 7101

REG: #18916104		DOB: 2/5/17		TATTOO: 7101							
Connealy Dublin 8223		Connealy Full Freight		Black Rina of Conanga 69		Act BW		65			
Connealy Guinness		EGL Target 1148		Ponderra of Conanga 750		Adj 205		613			
Panda of Conanga 3609		B/R New Frontier 095		ALC LYN T03L		AGE OF DAM		9			
ALC Nobleman N01N		S A Neutron 15		Andora Blackcap 1072							
Arrow One Blackcap 853											
Andora Blackcap 7115											
CED	BW	WW	YW	CEM	MILK	MARB	RE	\$W	\$F	\$B	
6	0.3	43	79	12	23	0.78	0.34	38.74	30.37	107.05	

84 Arrow One Blackbird 7102

REG: #18917359		DOB: 2/4/17		TATTOO: 7102							
Vermilion Payweight J847		Vermilion Dateline 7078		Vermilion Lass 7969		Act BW		84			
Basin Payweight 107S		C A Future Direction 5321		Basin Lucy 178E		Adj 205		691			
Basin Lucy 3829		Cole Creek Black Cedar 46P		Cole Creek Clovanada 49S		AGE OF DAM		4			
Cole Creek Cedar Ridge 1V		B C C Bushwacker 41-93		Bear Mtn Blackbird 2283							
Arrow One Blackbird 381											
Bear Mtn Blackbird 5135											
CED	BW	WW	YW	CEM	MILK	MARB	RE	\$W	\$F	\$B	
2	2.7	59	98	9	24	NA	NA	50.74	53.11	NA	

85 Arrow One Ethelda 7105

REG: #18917362		DOB: 2/6/17		TATTOO: 7105							
Vermilion Payweight J847		Vermilion Dateline 7078		Vermilion Lass 7969		Act BW		81			
Basin Payweight 107S		C A Future Direction 5321		Basin Lucy 178E		Adj 205		672			
Basin Lucy 3829		G A R Grid Maker		S A V Abigale 0451		AGE OF DAM		5			
S A V Bismarck 5682		O C C Legend 616L		U R Ethelda 33N							
J D H Ethelda 215											
J D H Ethelda 500											
CED	BW	WW	YW	CEM	MILK	MARB	RE	\$W	\$F	\$B	
4	2.6	61	101	10	18	0.33	0.69	46.39	57.15	126.85	





86 Arrow One Barbara 7115

REG: #19008613		DOB: 2/11/17		TATTOO: 7115		Act BW					
GAR-EGL Protege		Rito 112 of 2536 Rito 616		L B 6807 Isabel 339		80					
Quaker Hill Firestorm 3PT1		Ideal 4355 of 0T26 2440		QHF Blackcap 4V16 of 1H8		Adj 205					
QHF Blackcap 6E2 of 4V16 4355		O C C Kruger 929K		B A A Georgina 020		639					
B A A Slugger 310A		S A F Fortune 3049		S R Barbara 531		AGE OF DAM					
BAA Barbara 5137A						2					
Paws Up 9001 Fortune											
CED	BW	WW	YW	CEM	MILK	MARB	RE	\$W	\$F	\$B	
7	1	53	89	8	26	0.6	0.4	55.11	42.97	103.62	

87 Arrow One Blackcap 7125

REG: #18917366		DOB: 2/18/17		TATTOO: 7125		Act BW					
Vermilion Payweight J847		Vermilion Dateline 7078		Vermilion Lass 7969		82					
Basin Payweight 107S		C A Future Direction 5321		Basin Lucy 178E		Adj 205					
Basin Lucy 3829		Sitz Traveler 8180		S A V Emulous 8145		653					
S A V Final Answer 0035		Alberda Traveler 416		Andora Blackcap 7115		AGE OF DAM					
Arrow One Blackcap 980						8					
Arrow One Blackcap 05											
CED	BW	WW	YW	CEM	MILK	MARB	RE	\$W	\$F	\$B	
3	2.7	52	87	10	20	0.43	0.49	40.35	38.29	113.57	

88 Arrow One Lady Ida 7128

REG: #18915034		DOB: 2/20/17		TATTOO: 7128		Act BW					
Basin Payweight 107S		Vermilion Payweight J847		Basin Lucy 3829		79					
Arrow One Payweight 541		Dalebanks Extender 6012		A 1 Blackcap 11		Adj 205					
A 1 Blackcap 313		TC Gridiron 258		S A V Madame Pride 3249		649					
S A V Iron Mountain 8066		Boyd New Day 8005		B/R Lady Ida 7135		AGE OF DAM					
Arrow One Lady Ida 122						6					
Arrow One Lady Ida 747											
CED	BW	WW	YW	CEM	MILK	MARB	RE	\$W	\$F	\$B	
2	2.4	53	93	10	21	0.34	0.45	41.44	48.29	116.09	

89 Arrow One Duchess 7138

REG: #18915044		DOB: 2/28/17		TATTOO: 7138		Act BW					
Connealy Consensus 7229		Connealy Consensus		Blue Lilly of Conanga 16		87					
Bear Mtn Consensus 3018		Frontier 627C of Mill Brae		Stevenson Enchantress 4996		Adj 205					
Stevenson Enchantress 449J		S A V Final Answer 0035		Arrow One Grace 430		635					
Arrow One Best Answer 849		ALC Nobleman N01N		B/R Easter Tulloch Duch 3269		AGE OF DAM					
Arrow One Duchess 083						7					
Arrow One Duchess 714											
CED	BW	WW	YW	CEM	MILK	MARB	RE	\$W	\$F	\$B	
2	3	47	84	7	24	0.5	0.3	37.01	36.42	92.44	

90 Arrow One Grace 7151

REG: #18915056		DOB: 3/8/17		TATTOO: 7151						
Mohren South Dakota 402	Mohren Density 730	Act BW								
Kraye South Dakota JK 5126	Mohren Jilt 539	80								
Miss Burgess JK 9268	S A V Final Answer 0035	Adj 205								
	Miss Burgess JK 7348	686								
S Chisum 6175	S Alliance 3313	AGE OF DAM								
Arrow One Grace 217	S Gloria 464	5								
Arrow One Grace 712	ALC Nobleman N01N									
	D M A One Garce 04									
CED	BW	WW	YW	CEM	MILK	MARB	RE	\$W	\$F	\$B
3	2.6	67	111	9	22	0.45	0.42	55.62	71.29	133.7

91 Arrow One Blackbird 7135

REG: #18915045		DOB: 2/28/17		TATTOO: 7137						
Basin Payweight 107S	Vermilion Payweight J847	Act BW								
Arrow One Payweight 541	Basin Lucy 3829	80								
A 1 Blackcap 313	Dalebanks Extender 6012	Adj 205								
	A 1 Blackcap 11	586								
Boyd New Day 8005	A A R New Trend	AGE OF DAM								
Arrow One Blackbird 418	S V F Forever Lady 57D	3								
H A R Blackbird 270	4 G 861B 855									
	H A R Blackbird 950									
CED	BW	WW	YW	CEM	MILK	MARB	RE	\$W	\$F	\$B
4	1.8	43	77	8	25	0.17	0.59	38.69	26.9	102.85

CONGRATULATIONS 4-H EXHIBITORS!

We will be giving back \$200.00 to each child that shows in 4-H at the county level or State Fair level on a bred heifer purchased in the 2018 sale!

Morgan Rice - Hooker County Fair Grand Champion Bred Heifer



ARROW ONE ANGUS

ARROW ONE ANGUS

Wayne and Dona Rundback
3453 Brown Road
North Platte, NE 69101

15th Annual
ARROW ONE ANGUS

Bull & Heifer Sale



ARROW ONE FULL POWER 729



ARROW ONE DUCHESS 713

MONDAY, FEBRUARY 26, 2018

1:00 P.M. CST

LINCOLN CO FAIRGROUNDS / NORTH PLATTE, NE

ARROWONEANGUS.COM