

ARROW ONE ANGUS

21st Annual Bull Sale

SUNDAY - 3:00 PM

APRIL 7, 2024

**AT THE RANCH SOUTH OF
NORTH PLATTE, NEBRASKA**

Selling

25 YEARLING BULLS

13 OPEN HEIFERS





WELCOME

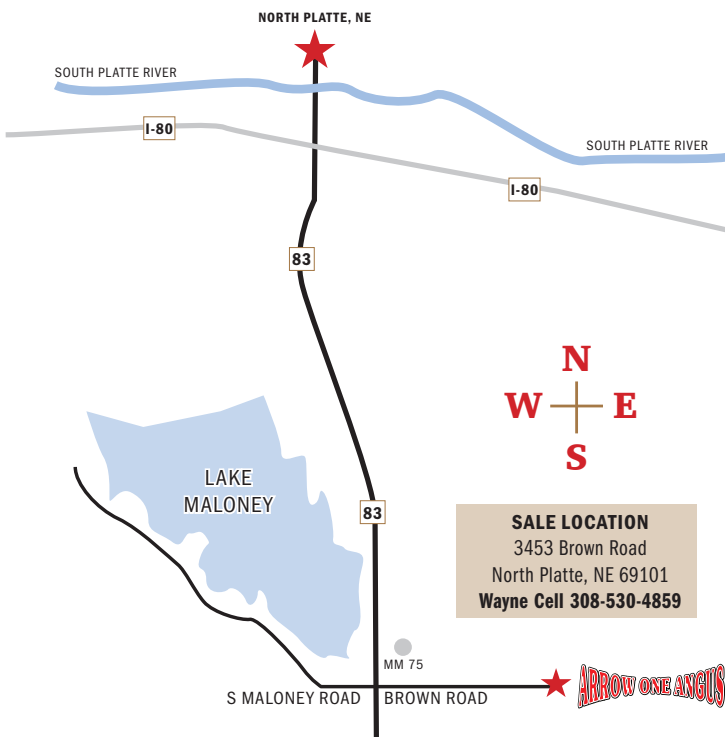
Wayne and I would like to invite you to our 21st annual bull and heifer sale on Sunday, April 7, 2024 at 3:00 p.m. central time. Wayne and I would like to thank all of our customers and family for all of your support for the 21 years we have been selling Angus bulls and heifers.

We have backed the calving date up to February and March on these bulls and heifers. As always, they are on a complete vaccination program with Stockman Vet Clinic. The bulls have been semen checked and tested BVD negative. An additional supplement sheet will be provided on the scrotal and sale order the day of our sale. The bulls were ultrasounded on February 8th, 2024. We are offering several calving ease Angus bulls, a few SimAngus commercial bulls and some exceptional females in our sale this year.

The feed program the bulls and heifers are on is corn screenings, distillers and a hay mix ration. These bulls come with Arrow One Angus breeding and soundness guarantee. We feel the steer and heifer calves from our customers that Arrow One Angus purchase and feed has shown us the important measurement of our genetics. Our program goal is to work with our customers more than just sale day but to stay active in marketing and breeding our Angus cattle.

Wayne and I are very thankful to each of you and we do not take for granted the importance of our loyal customers through the years of selling Angus cattle. There will be food and refreshments after the sale!

*Sincerely,
Wayne and Dona Rundback*



ARROW ONE ANGUS ANNUAL BULL SALE

ARROW ONE ANGUS

SUNDAY – 3:00 PM CT

APRIL 7, 2024

AT THE RANCH SOUTH OF
NORTH PLATTE, NEBRASKA

Refreshments served after the sale

Wayne and Dona Rundback
3453 Brown Road
North Platte, NE 69101
Wayne Cell 308-530-4859

AUCTIONEER Thad McDermott 308-530-4806

SALE LOCATION *Approx. 7.5 miles south of North Platte, NE*

Go south of North Platte on Highway 83 for 6 miles to mile marker 75

Turn east on Brown Road and go 1 1/2 miles

We have a pipe entryway with our name on the top!

VETERINARIAN

Stockman's Vet Clinic 308-532-7210

3666 N Stockman Rd | North Platte, NE 69101

TERMS AND CONDITIONS The cattle sell under the suggested Terms and Conditions of the American Angus Association. These terms are available at anytime upon request.

LIABILITIES All persons attending do so at their own risk. Arrow One Angus assumes no liability, legal, or otherwise, for any accidents which may occur.

GUARANTEE All bulls selling for \$3,000 or more are guaranteed against breeding injury for the first breeding season. Breeding season is defined as the 90-day period following the first turnout of the bulls. If a replacement bull is available, he will be provided. Or if the buyer prefers, credit toward one bull will be given in the following year's sale minus salvage value of the injured bull. Please notify us as soon as possible should injury occur and preferably before September 1st, 2024.

SUPPLEMENT Scrotal data will be available on a supplement sheet sale day in addition to any other announcements.

All bulls will be delivered free of charge starting immediately after the sale within a 150 mile radius.



ARROWONEANGUS.COM

YEARLING ANGUS BULLS

1

Arrow One Fireball 32

BULL REG: 20855931 **DOB:** 02/01/23 **TATTOO:** 32

G A R Sure Fire 6404
GB Fireball 672
GB Anticipation 432

Bear Mtn Justify 9523
Arrow One Erica 190
Arrow One Miss Erica 8111

G A R Sure Fire#
G A R Complete N281
G A R Anticipation
GB Ambush 269

Bear Mtn Justify
Bear Mtn Jamie 5012
Arrow One Commando 612
Arrow One Miss Erica 434

ACT BW
60
ADJ WW
655
ADJ YW
1119
AV DAILY GAIN
3.7

CED	BW	WW	YW	CEM	MILK	MARB	RE	\$M	\$W	\$F	\$B	\$C
15	-2.0	57	103	16	25	1.07	0.58	55	55	83	155	256

ADJ %IMF: 3.98, **ADJ RE:** 11.7

Dam Production Record: **BWR** 1@85, **WWR** 1@96, **YWR** 1@101

Dam's Age: 2

G A R HOME TOWN



2

Arrow One Hometown 35

BULL REG: 20855514 **DOB:** 02/03/23 **TATTOO:** 35

G A R Ashland#
G A R Home Town
Chair Rock Sure Fire 6095

MOGCK Entice
Arrow one Blackbird 127
Arrow One Blackbird 486

G A R Early Bird
Chair Rock Ambush 1018
G A R Sure Fire#
Chair Rock Progress 3005

SydGen Enhance#
MOGCK Erica 2255#
Arrow One Rancher 65
Arrow One Blackbird 956#

ACT BW
73
ADJ WW
634
ADJ YW
983
AV DAILY GAIN
3.0

CED	BW	WW	YW	CEM	MILK	MARB	RE	\$M	\$W	\$F	\$B	\$C
9	1.3	62	116	7	23	0.86	0.54	60	50	85	149	253

ADJ %IMF: 4.71, **ADJ RE:** 11.4

Dam Production Record: **BWR** 1@107, **WWR** 1@99, **YWR** 1@100

Dam's Age: 2

ARROW ONE ANGUS

3

Arrow One Fireball 36

BULL REG: 20855934 **DOB:** 02/03/23 **TATTOO:** 36

G A R Sure Fire 6404
GB Fireball 672
GB Anticipation 432

G A R Sure Fire#
G A R Complete N281
G A R Anticipation
GB Ambush 269

Kraye South Dakota JK 5126
Arrow One Duchess 142
Arrow One Duchess 365#

Mohnen South Dakota 402#
Miss Burgess JK 9268#
Bear Mtn Wagon Master 1002
Arrow One Duchess 129

ACT BW	76
ADJ WW	698
ADJ YW	1140
AV DAILY GAIN	3.7

CED	BW	WW	YW	CEM	MILK	MARB	RE	\$M	\$W	\$F	\$B	\$C
7	1.6	64	114	11	25	1.15	0.57	53	55	83	160	261

ADJ %IMF: 4.87, **ADJ RE:** 11.5

Dam Production Record: **BWR** 1@105, **WWR** 1@102, **YWR** 1@103

Dam's Age: 2

4

Arrow One Hometown 37

BULL REG: 20855513 **DOB:** 02/05/23 **TATTOO:** 37

G A R Ashland#
G A R Home Town
Chair Rock Sure Fire 6095

G A R Early Bird
Chair Rock Ambush 1018
G A R Sure Fire#
Chair Rock Progress 3005

Arrow One Chaps 810
Arrow One Blackbird 192
Arrow One Blackbird 9131

Ellingson Chaps 4095#
Arrow One Erica 611
Arrow One Reserve 636
Arrow One Blackbird 733

ACT BW	71
ADJ WW	731
ADJ YW	1128
AV DAILY GAIN	3.7

CED	BW	WW	YW	CEM	MILK	MARB	RE	\$M	\$W	\$F	\$B	\$C
12	-0.3	63	114	10	23	0.79	0.58	75	54	81	142	259

ADJ %IMF: 3.76, **ADJ RE:** 12.9

Dam Production Record: **BWR** 1@99, **WWR** 1@107, **YWR** 1@102

Dam's Age: 2

S ARCHITECT 9501



5

Arrow One Architect 38

BULL REG: 20854190 **DOB:** 02/05/23 **TATTOO:** 38

SydGen Blueprint
S Architect 9501
S Blossom 7514

KM Broken Bow 002#
Sitz Florabelle Fanny 4735
S Whitlock 179#
S Blossom 5525

Connealy Counselor#
Arrow One Pride 69
Arrow One Pride 439

Connealy Mentor 7374#
Jaze of Conanga 234
S A V Platinum 0010#
Arrow One Pride 874

ACT BW	60
ADJ WW	633
ADJ YW	1097
AV DAILY GAIN	3.9

CED	BW	WW	YW	CEM	MILK	MARB	RE	\$M	\$W	\$F	\$B	\$C
13	-2.3	69	116	11	22	0.30	0.68	74	63	94	128	240

ADJ %IMF: 2.89, **ADJ RE:** 11.6

Dam Production Record: **BWR** 5@92, **WWR** 5@102, **YWR** 5@102

Dam's Age: 7

ARROW ONE ANGUS

6

Arrow One Architect 310

BULL REG: 20854191 **DOB:** 02/05/23 **TATTOO:** 310

SydGen Blueprint
S Architect 9501
S Blossom 7514

KM Broken Bow 002#
Sitz Florabelle Fanny 4735
S Whitlock 179#
S Blossom 5525

Bear Mtn Concensus 3018
Arrow One Grace 5107
Arrow one Grace 047

Connealy Consensus 7229#
Stevenson Enchantress 449J#
Gardens Prime Star#
Arrow One Grace 85

ACT BW
73
ADJ WW
653
ADJ YW
1149
AV DAILY GAIN
4.0

CED	BW	WW	YW	CEM	MILK	MARB	RE	\$M	\$W	\$F	\$B	\$C
7	0.4	72	120	11	26	0.70	0.51	89	69	103	155	290

ADJ %IMF: 4.26, **ADJ RE:** 10.2

Dam Production Record: **BWR** 7@103, **WWR** 7@101, **YWR** 5@99

Dam's Age: 8



GB FIREBALL 672

7

Arrow One Fireball 311

BULL REG: 20864376 **DOB:** 02/06/23 **TATTOO:** 311

G A R Sure Fire 6404
GB Fireball 672
GB Anticipation 432

G A R Sure Fire#
G A R Complete N281
G A R Anticipation
GB Ambush 269

Connealy Consensus 7229#
Arrow One Blkcp Empress 345
Arrow One Blackcap Empress02

Connealy Consensus#
Blue Lilly of Conanga 16
Alberda Traveler 416#
Andora Blkcp Empress 1106

ACT BW
78
ADJ WW
677
ADJ YW
1096
AV DAILY GAIN
3.5

CED	BW	WW	YW	CEM	MILK	MARB	RE	\$M	\$W	\$F	\$B	\$C
7	1.8	53	100	11	24	1.38	0.63	54	45	91	182	290

ADJ %IMF: 4.05, **ADJ RE:** 10.7

Dam Production Record: **BWR** 9@100, **WWR** 9@100, **YWR** 7@99

Dam's Age: 10

8

Arrow One Fireball 313

BULL REG: 20855975 **DOB:** 02/07/23 **TATTOO:** 313

G A R Sure Fire 6404
GB Fireball 672
GB Anticipation 432

G A R Sure Fire#
G A R Complete N281
G A R Anticipation
GB Ambush 269

PA Full Power 1208#
Arrow One Blackbird 826
Arrow One Blackbird 20

PA Power Tool 9108#
Pine View SQR Rita W091
S A V Iron Mountain 8066#
Arrow One Blackbird 590

ACT BW
76
ADJ WW
647
ADJ YW
1105
AV DAILY GAIN
4.0

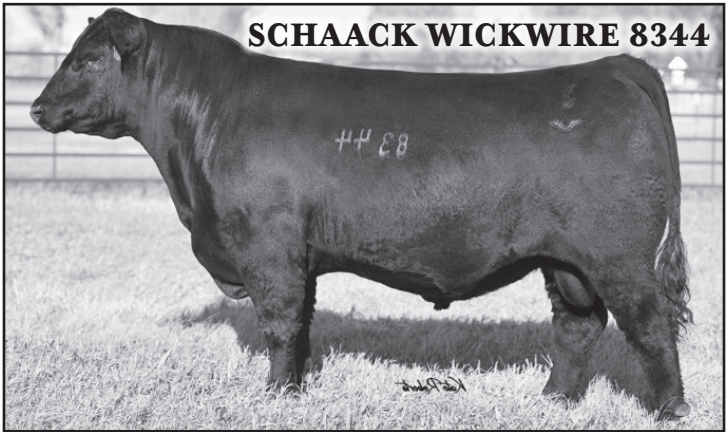
CED	BW	WW	YW	CEM	MILK	MARB	RE	\$M	\$W	\$F	\$B	\$C
8	1.0	60	109	12	19	1.57	0.81	55	47	99	199	313

ADJ %IMF: 5.38, **ADJ RE:** 12.0

Dam Production Record: **BWR** 3@98, **WWR** 3@90, **YWR** 2@98

Dam's Age: 5

ARROW ONE ANGUS



SCHAACK WICKWIRE 8344

9

Arrow One Wickwire 315

BULL REG: 20854192 DOB: 02/08/23 TATTOO: 315

V A R Legend 5019#
Schaack Wickwire 8344
 Woodside Rita 4P10 of 1351

Bear Mtn Justify 9523
Arrow One Blackbird 176
 Arrow One Blackbird 889

V A R Discovery 2240#
 PF CC&7 Henrietta Pride 1044
 G A R Prophet#
 Goode Complete 1351

Bear Mtn Justify
 Bear Mtn Jamie 5012
 Ellingson Chaps 4095#
 Arrow One Blackbird 648

ACT BW
74
ADJ WW
590
ADJ YW
888
AV DAILY GAIN
2.6

CED	BW	WW	YW	CEM	MILK	MARB	RE	\$M	\$W	\$F	\$B	\$C
7	0.7	56	105	11	28	0.81	0.24	72	51	80	135	247

ADJ %IMF: 3.93, ADJ RE: 11.0

Dam Production Record: **BWR 1@103, WWR 1@86, YWR 1@80**

Dam's Age: **2**

10

Arrow One Fireball 316

BULL REG: 20855936 DOB: 02/09/23 TATTOO: 316

G A R Sure Fire 6404
GB Fireball 672
 GB Anticipation 432

Bar R Jet Black 5063#
Arrow One Princess 131
 Arrow One Princess 739

G A R Sure Fire#
 G A R Complete N281
 G A R Anticipation
 GB Ambush 269

Connealy Black Granite#
 Bar R Iris Anita 0113
 PA Full Power 1208#
 Arrow One Princess 468

ACT BW
75
ADJ WW
736
ADJ YW
1259
AV DAILY GAIN
4.4

CED	BW	WW	YW	CEM	MILK	MARB	RE	\$M	\$W	\$F	\$B	\$C
11	0.7	70	127	12	25	1.13	0.63	70	59	90	167	287

ADJ %IMF: 4.67, ADJ RE: 12.5

Dam Production Record: **BWR 1@104, WWR 1@107, YWR 1@114**

Dam's Age: **2**

11

Arrow One Fireball 320

BULL REG: 20855981 DOB: 02/11/23 TATTOO: 320

G A R Sure Fire 6404
GB Fireball 672
 GB Anticipation 432

S Chisum 6175#
Arrow One Erica 422
 Arrow one Erica 025

G A R Sure Fire#
 G A R Complete N281
 G A R Anticipation
 GB Ambush 269

S Alliance 3313
 S Gloria 464#
 S A V Bismarck 5682#
 Arrow One Erica 819

ACT BW
77
ADJ WW
706
ADJ YW
1125
AV DAILY GAIN
3.6

CED	BW	WW	YW	CEM	MILK	MARB	RE	\$M	\$W	\$F	\$B	\$C
10	0.9	63	115	14	22	1.13	0.86	60	54	115	192	309

ADJ %IMF: 3.93, ADJ RE: 12.0

Dam Production Record: **BWR 7@101, WWR 8@99, YWR 6@99**

Dam's Age: **9**

ARROW ONE ANGUS

KCF BENNETT SUMMATION



12

Arrow One Summation 322

BULL REG: 20854193 **DOB:** 02/12/23 **TATTOO:** 322

K C F Bennett Consent Y75#
K C F Bennett Summation
 Thomas Patricia 9705

Arrow One Long Answer
Arrow One Erica 227
 Arrow one Miss Erica 012

Connealy Consensus#
 K C F Miss Protege W148
 S S Objective T510 OT26#
 Thomas Patricia 71138

S A V Final Answer 0035#
 J D H Ethelda 500
 Arrow One Rancher 65
 Arrow One Miss Erica 464

ACT BW
76
ADJ WW
690
ADJ YW
1165
AV DAILY GAIN
3.9

CED	BW	WW	YW	CEM	MILK	MARB	RE	\$M	\$W	\$F	\$B	\$C
10	0.2	71	128	7	27	0.41	0.73	62	65	106	147	253

ADJ %IMF: 3.23, **ADJ RE:** 13.1

Dam Production Record: **BWR** 8@97, **WWR** 8@97, **YWR** 7@99

Dam's Age: **11**

13

Arrow One Architect 326

BULL REG: 20854194 **DOB:** 02/13/23 **TATTOO:** 326

SydGen Blueprint
S Architect 9501
 S Blossom 7514

Bear Mtn Concensus 3018
Arrow One Duchess 7138
 Arrow One Duchess 083

KM Broken Bow 002#
 Sitz Florabelle Fanny 4735
 S Whitlock 179#
 S Blossom 5525

Connealy Consensus 7229#
 Stevenson Enchantress 449J#
 Arrow One Best Answer 849
 Arrow One Duchess 714

ACT BW
71
ADJ WW
731
ADJ YW
1249
AV DAILY GAIN
4.0

CED	BW	WW	YW	CEM	MILK	MARB	RE	\$M	\$W	\$F	\$B	\$C
6	0.7	74	129	10	24	0.40	0.69	78	63	106	146	267

ADJ %IMF: 2.68, **ADJ RE:** 13.0

Dam Production Record: **BWR** 4@103, **WWR** 4@102, **YWR** 3@104

Dam's Age: **6**

14

Arrow One Summation 331

BULL REG: 20854195 **DOB:** 02/14/23 **TATTOO:** 331

K C F Bennett Consent Y75#
K C F Bennett Summation
 Thomas Patricia 9705

S Chisum 6175#
Arrow One Grace 343
 Arrow One Grace 712

Connealy Consensus#
 K C F Miss Protege W148
 S S Objective T510 OT26#
 Thomas Patricia 71138

S Alliance 3313
 S Gloria 464#
 ALC Nobleman N01N#
 D M A One Garce 04

ACT BW
73
ADJ WW
494
ADJ YW
915
AV DAILY GAIN
3.7

CED	BW	WW	YW	CEM	MILK	MARB	RE	\$M	\$W	\$F	\$B	\$C
8	1.9	54	106	10	22	0.61	0.69	68	42	101	153	266

ADJ %IMF: 4.02, **ADJ RE:** 10.9

Dam Production Record: **BWR** 8@101, **WWR** 7@92, **YWR** 6@96

Dam's Age: **10**

ARROW ONE ANGUS

15

Arrow One Fireball 113/337

BULL REG: 20854196 **DOB:** 02/23/23 **TATTOO:** 337

GB Fireball 672
Arrow one Fireball 113
 Arrow One Blkcap 934

RBM RAVE
Arrow One Duchess 138
 Arrow One Duchess 557

G A R Sure Fire 6404
 GB Anticipation 432
 DL Dually#
 Arrow One Blkcap 354

Jindra Acclaim#
 RBM Polly B66#
 V A R Reserve 1111#
 Arrow One Duchess 119

ACT BW
74
ADJ WW
701
ADJ YW
1104
AV DAILY GAIN
3.4

CED	BW	WW	YW	CEM	MILK	MARB	RE	\$M	\$W	\$F	\$B	\$C
7	1.5	67	122	11	24	0.66	0.31	77	55	86	135	252

ADJ %IMF: 3.08, **ADJ RE:** 10.5

Dam Production Record: **BWR** 1@103, **WWR** 1@102, **YWR** 1@100

Dam's Age: 2

16

Arrow One Dually 051/338

BULL REG: 20854197 **DOB:** 02/26/23 **TATTOO:** 338

DL Dually#
Arrow One Dually 051
 Arrow One Blackbird 6121

Connealy Consensus 7229#
Arrow One Blackcap 442
 Arrow One Blackcap 838

DL Sonic 444#
 DL Incentive 2103
 Ellingson Chaps 4095#
 Arrow One Blackbird 6121

Connealy Consensus#
 Blue Lilly of Conanga 16
 Ironwood New Level#
 Arrow One Blackcap 657#

ACT BW
80
ADJ WW
746
ADJ YW
1231
AV DAILY GAIN
4.5

CED	BW	WW	YW	CEM	MILK	MARB	RE	\$M	\$W	\$F	\$B	\$C
2	2.8	73	127	9	20	0.49	0.52	77	53	90	132	248

ADJ %IMF: 3.16, **ADJ RE:** 11.5

Dam Production Record: **BWR** 5@96, **WWR** 5@102, **YWR** 5@104

Dam's Age: 9

17

Arrow One Dually 051/342

BULL REG: 20854198 **DOB:** 03/01/23 **TATTOO:** 342

DL Dually#
Arrow One Dually 051
 Arrow One Blackbird 6121

Arrow One Rancher 65
Arrow One Blackbird 486
 Arrow One Blackbird 956#

DL Sonic 444#
 DL Incentive 2103
 Ellingson Chaps 4095#
 Arrow One Blackbird 6121

Kahn Broadband R A 94L#
 B/R Easter Tulloch Duch 3269#
 S A V Final Answer 0035#
 Riverbend Blackbird 3098#

ACT BW
81
ADJ WW
745
ADJ YW
1099
AV DAILY GAIN
3.0

CED	BW	WW	YW	CEM	MILK	MARB	RE	\$M	\$W	\$F	\$B	\$C
2	2.6	77	129	7	20	0.27	0.51	79	58	87	118	232

ADJ %IMF: 2.76, **ADJ RE:** 12.3

Dam Production Record: **BWR** 7@100, **WWR** 6@98, **YWR** 6@97

Dam's Age: 9

18

Arrow One Dually 051/343

BULL REG: 20854199 **DOB:** 03/01/23 **TATTOO:** 343

DL Dually#
Arrow One Dually 051
 Arrow One Blackbird 6121

Baldrige Colonel C251#
Arrow One Erica 986
 Arrow One Erica 819

DL Sonic 444#
 DL Incentive 2103
 Ellingson Chaps 4095#
 Arrow One Blackbird 6121

baldrige Xpand x743
 Baldrige Isabel Y69
 Arrow One Rancher 65
 Arrow One Erica 646

ACT BW
82
ADJ WW
674
ADJ YW
1116
AV DAILY GAIN
3.2

CED	BW	WW	YW	CEM	MILK	MARB	RE	\$M	\$W	\$F	\$B	\$C
-1	3.0	69	125	7	21	0.46	0.59	73	49	87	131	243

ADJ %IMF: 3.27, **ADJ RE:** 11.8

Dam Production Record: **BWR** 3@103, **WWR** 2@96, **YWR** 2@96

Dam's Age: 4

ARROW ONE ANGUS

19

Arrow One Dually 051/345

BULL REG: 20854200 DOB: 03/02/23 TATTOO: 345

DL Dually#
Arrow One Dually 051
 Arrow One Blackbird 6121

PA Full Power 1208#
Arrow One Princess 739
 Arrow One Princess 468

DL Sonic 444#
 DL Incentive 2103
 Ellingson Chaps 4095#
 Arrow One Blackbird 6121

PA Power Tool 9108#
 Pine View SQR Rita W091
 Connealy Consensus 7229#
 AJJ Princess 213A

ACT BW
78
ADJ WW
709
ADJ YW
1080
AV DAILY GAIN
4.0

CED	BW	WW	YW	CEM	MILK	MARB	RE	SM	SW	SF	SB	SC
2	2.4	74	129	6	19	0.59	0.55	92	54	84	132	263

ADJ %IMF: 2.71, ADJ RE: 11.3

Dam Production Record: **BWR 5@101, WWR 4@101, YWR 4@102**

Dam's Age: 6



BEAR MTN JUSTIFY 9523

20

Arrow One Justify 352

BULL REG: 20854201 DOB: 03/25/23 TATTOO: 352

Bear Mtn Justify
Bear Mtn Justify 9523
 Bear Mtn Jamie 5012

Arrow One Chisum 110
Arrow One Blackbird 4130
 Arrow One Blackbird 920

KG Justified 3023#
 Bear Mtn Judy 3092
 PVF Insight 0129#
 Bear Mtn Jamie 4101

S Chisum 6175#
 Arrow One Enchantress 49
 Arrow One Rancher 65
 Arrow One Blackbird 777#

ACT BW
75
ADJ WW
713
ADJ YW
TOO YOUNG
AV DAILY GAIN
3.5

CED	BW	WW	YW	CEM	MILK	MARB	RE	SM	SW	SF	SB	SC
7	0.6	60	106	9	28	0.26	0.62	60	59	96	128	226

ADJ %IMF: 3.87, ADJ RE: 11.3

Dam Production Record: **BWR 4@97, WWR 4@102, YWR 2@102**

Dam's Age: 9

21

Arrow One Dually 051/355

BULL REG: 20854202 DOB: 03/27/23 TATTOO: 355

DL Dually#
Arrow One Dually 051
 Arrow One Blackbird 6121

EF Commando 1366#
Arrow One Blkcp 764
 Arrow One Blkcap 354

DL Sonic 444#
 DL Incentive 2103
 Ellingson Chaps 4095#
 Arrow One Blackbird 6121

EF Complement 8088#
 Riverbend Young Lucy W1470
 Connealy Consensus 7229#
 Arrow One Blackcap 833

ACT BW
80
ADJ WW
747
ADJ YW
TOO YOUNG
AV DAILY GAIN
3.6

CED	BW	WW	YW	CEM	MILK	MARB	RE	SM	SW	SF	SB	SC
4	2.3	75	126	7	21	0.58	0.46	81	59	82	126	244

ADJ %IMF: 3.80, ADJ RE: 12.2

Dam Production Record: **BWR 4@100, WWR 4@103, YWR 3@100**

Dam's Age: 6

ARROW ONE ANGUS

COMMERCIAL SIM CROSS BULLS

22

Arrow One Dually 051/358

BULL REG: Commercial **DOB:** 3/22/23 **TATTOO:** 358

DL Dually#
Arrow One Dually 051
Arrow One Blackbird 6121

DL Sonic 444#
DL Incentive 2103
Ellingson Chaps 4095#
Arrow One Blackbird 6121

Commercial 1/2 Simm Cow

ACTUAL %IMF: 2.47, **ACTUAL RE:** 12.7

ACT BW
78
ACT WW
680
ACT YW
1220
AV DAILY GAIN
4.0

23

Arrow One Dually 051/360

BULL REG: Commercial **DOB:** 3/27/23 **TATTOO:** 360

DL Dually#
Arrow One Dually 051
Arrow One Blackbird 6121

DL Sonic 444#
DL Incentive 2103
Ellingson Chaps 4095#
Arrow One Blackbird 6121

Commercial 1/2 Simm Cow

ACTUAL %IMF: 2.60, **ACTUAL RE:** 09.4

ACT BW
80
ACT WW
660
ACT YW
1044
AV DAILY GAIN
3.6

24

Arrow One Dually 051/361

BULL REG: Commercial **DOB:** 3/29/23 **TATTOO:** 361

DL Dually#
Arrow One Dually 051
Arrow One Blackbird 6121

DL Sonic 444#
DL Incentive 2103
Ellingson Chaps 4095#
Arrow One Blackbird 6121

Commercial 1/2 Simm Cow

ACTUAL %IMF: 3.63, **ACTUAL RE:** 13.3

ACT BW
81
ACT WW
730
ACT YW
1300
AV DAILY GAIN
4.2

COMMERCIAL ANGUS BULL

25

Arrow One Fireball 113/359

BULL REG: Commercial **DOB:** 4/2/23 **TATTOO:** 359

GB Fireball 672
Arrow one Fireball 113
Arrow One Blkcap 934

G A R Sure Fire 6404
GB Anticipation 432
DL Dually#
Arrow One Blkcap 354

Commercial PB Angus Cow

ACTUAL %IMF: 3.28, **ACTUAL RE:** 11.4

ACT BW
68
ACT WW
650
ACT YW
1158
AV DAILY GAIN
3.6

YEARLING OPEN HEIFERS

27

Arrow One Erica 30

COW REG: 20854204 DOB: 02/01/23 TATTOO: 30

Jindra Acclaim#
RBM RAVE
RBM Polly B66#

TEX Playbook 5437#
Arrow One Erica 890
Arrow One Erica 219

Jindra 3rd Dimension
Jindra Blackbird Lassy 1111
Connealy Final Product#
RBM CC7 Y316

Basin Payweight 1682#
Rita 1C43 of 9M26 Complete
Arrow One Rancher 65
Arrow One Miss Erica 574

ACT BW
62
ADJ WW
646
ADJ YW
793

CED	BW	WW	YW	CEM	MILK	MARB	RE	\$M	\$W	\$F	\$B	\$C
15	-2.1	65	119	16	29	0.38	0.49	60	64	103	140	242

ADJ %IMF: 4.04, ADJ RE: 9.2

Dam Production Record: BWR 3@88, WWR 3@100, YWR 2@98

Dam's Age: 5

28

Arrow One Pride 31

COW REG: 20854205 DOB: 01/27/23 TATTOO: 31

Jindra Acclaim#
RBM RAVE
RBM Polly B66#

GB Fireball 672
Arrow One Pride 137
Arrow One Platinum 33

Jindra 3rd Dimension
Jindra Blackbird Lassy 1111
Connealy Final Product#
RBM CC7 Y316

G A R Sure Fire 6404
GB Anticipation 432
S A V Platinum 0010#
Arrow One Pride 874

ACT BW
60
ADJ WW
627
ADJ YW
811

CED	BW	WW	YW	CEM	MILK	MARB	RE	\$M	\$W	\$F	\$B	\$C
13	-0.9	68	128	15	25	0.24	0.25	42	58	91	118	195

ADJ %IMF: 3.85, ADJ RE: 8.3

Dam Production Record: BWR 1@93, WWR 1@102, YWR 1@104

Dam's Age: 2

29

Arrow One Blackcap 33

COW REG: 20854206 DOB: 02/01/23 TATTOO: 33

Jindra Acclaim#
RBM RAVE
RBM Polly B66#

Arrow One Cowboy Up 837
Arrow one Blackcap 161
Arrow One Blackcap 5109

Jindra 3rd Dimension
Jindra Blackbird Lassy 1111
Connealy Final Product#
RBM CC7 Y316

HA Cowboy Up 5405#
Arrow One Erica 274#
Bear Mtn Concensus 3018
Wical Blackcap 214

ACT BW
58
ADJ WW
597
ADJ YW
768

CED	BW	WW	YW	CEM	MILK	MARB	RE	\$M	\$W	\$F	\$B	\$C
11	-1.0	60	112	12	28	0.28	0.23	61	56	82	111	205

ADJ %IMF: 4.61, ADJ RE: 8.0

Dam Production Record: BWR 1@90, WWR 1@97, YWR 1@99

Dam's Age: 2

ARROW ONE ANGUS

30

Arrow One Blackbird 34

COW REG: 20855963 DOB: 02/03/23 TATTOO: 34

G A R Sure Fire 6404
GB Fireball 672
 GB Anticipation 432

MOGCK Entice
Arrow One Blackbird 077
 Arrow One Blackbird 21

G A R Sure Fire#
 G A R Complete N281
 G A R Anticipation
 GB Ambush 269

SydGen Enhance#
 MOGCK Erica 2255#
 Arrow one Bismark 06
 Arrow one Blackbird 045

ACT BW
80
ADJ WW
659
ADJ YW
830

CED	BW	WW	YW	CEM	MILK	MARB	RE	\$M	\$W	\$F	\$B	\$C
8	1.2	70	124	10	28	1.13	0.57	58	62	88	164	271

ADJ %IMF: 5.77, ADJ RE: 8.0

Dam Production Record: BWR 2@106, WWR 2@103, YWR 1@101

Dam's Age: 3

31

Arrow One Princess 317

COW REG: 20854209 DOB: 02/09/23 TATTOO: 317

V A R Legend 5019#
Schaack Wickwire 8344
 Woodside Rita 4P10 of 1351

Arrow One Cowboy Up 837
Arrow One Princess 184
 LaGrand Princess Eileen 0101

V A R Discovery 2240#
 PF CC&7 Henrietta Pride 1044
 G A R Prophet#
 Goode Complete 1351

HA Cowboy Up 5405#
 Arrow One Erica 274#
 O C C Prototype 847P
 Hoff Princess Eileen 5128

ACT BW
70
ADJ WW
618
ADJ YW
775

CED	BW	WW	YW	CEM	MILK	MARB	RE	\$M	\$W	\$F	\$B	\$C
5	1.9	64	118	8	28			67	54	82		

ADJ %IMF: , ADJ RE:

Dam Production Record: BWR 1@107, WWR 1@100, YWR 1@99

Dam's Age: 2

32

Arrow One Blackbird 314

COW REG: 20854208 DOB: 02/08/23 TATTOO: 314

SydGen Blueprint
S Architect 9501
 S Blossom 7514

Connealy Consensus 7229#
Arrow One Blackbird 379
 Arrow One Blackbird 667#

KM Broken Bow 002#
 Sitz Florabelle Fanny 4735
 S Whitlock 179#
 S Blossom 5525

Connealy Consensus#
 Blue Lilly of Conanga 16
 Kahn Broadband R A 94L#
 4 G Erica 221

ACT BW
78
ADJ WW
643
ADJ YW
853

CED	BW	WW	YW	CEM	MILK	MARB	RE	\$M	\$W	\$F	\$B	\$C
6	0.9	69	117	8	27	0.39	0.63	87	67	92	130	256

ADJ %IMF: 3.48, ADJ RE: 8.9

Dam Production Record: BWR 9@103, WWR 8@100, YWR 6@106

Dam's Age: 10

33

Arrow One Blkcap Empress 318

COW REG: 20864159 DOB: 02/09/23 TATTOO: 318

Jindra Acclaim#
RBM RAVE
 RBM Polly B66#

TEX Playbook 5437#
Arrow One Blkcap Empress 830
 Arrow One Blkcap Empress 654

Jindra 3rd Dimension
 Jindra Blackbird Lassy 1111
 Connealy Final Product#
 RBM CC7 Y316

Basin Payweight 1682#
 Rita 1C43 of 9M26 Complete
 Arrow One Rancher 65
 Arrow One Blkcap Empress 345

ACT BW
80
ADJ WW
707
ADJ YW
851

CED	BW	WW	YW	CEM	MILK	MARB	RE	\$M	\$W	\$F	\$B	\$C
8	0.7	74	137	13	29	0.55	0.39	58	63	111	155	259

ADJ %IMF: 4.12, ADJ RE: 7.7

Dam Production Record: BWR 3@99, WWR 3@105, YWR 3@103

Dam's Age: 5

ARROW ONE ANGUS

34

Arrow One Blackbird 319

COW REG: 20854210 **DOB:** 02/10/23 **TATTOO:** 319

V A R Legend 5019#
Schaack Wickwire 8344
Woodside Rita 4P10 of 1351

V A R Discovery 2240#
PF CC&7 Henrietta Pride 1044
G A R Prophet#
Goode Complete 1351

ACT BW
76
ADJ WW
599
ADJ YW
770

Bear Mtn Wagon Master 1002
Arrow One Blackbird 498#
Arrow One Blackbird 20

S A V Pioneer 7301#
Stevenson Enchantress 449J#
S A V Iron Mountain 8066#
Arrow One Blackbird 590

CED	BW	WW	YW	CEM	MILK	MARB	RE	\$M	\$W	\$F	\$B	\$C
5	1.3	59	109	11	29	1.16	0.32	49	55	84	155	250

ADJ %IMF: 6.43, **ADJ RE:** 7.9

Dam Production Record: **BWR** 6@102, **WWR** 5@104, **YWR** 5@104

Dam's Age: 9

35

Arrow One 323

COW REG: Pending **DOB:** 2/10/23 **TATTOO:** 323

SydGen Blueprint
S Architect 9501
S Blossom 7514

KM Broken Bow 002#
Sitz Florabelle Fanny 4735
S Whitlock 179#
S Blossom 5525

ACT BW
73
ADJ WW
620
ADJ YW
900

Bear Mtn Wagon Master 1002
Arrow One Duchess 365
Arrow One Duchess 129

S A V Pioneer 7301#
Stevenson Enchantress 449J#
S A V Iron Mountain 8066#
B/R Easter Tulloch Duch 3269#

CED	BW	WW	YW	CEM	MILK	MARB	RE	\$M	\$W	\$F	\$B	\$C

ADJ %IMF: 5.66, **ADJ RE:** 8.0

Dam Production Record: **BWR** @, **WWR** @, **YWR** @

Dam's Age: 10

36

Arrow One Blackcap 321

COW REG: 20854203 **DOB:** 02/11/23 **TATTOO:** 321

SydGen Blueprint
S Architect 9501
S Blossom 7514

KM Broken Bow 002#
Sitz Florabelle Fanny 4735
S Whitlock 179#
S Blossom 5525

ACT BW
78
ADJ WW
683
ADJ YW
867

Bear Mtn Consensus 3018
Arrow One Blackcap 5109
Wical Blackcap 214

Connealy Consensus 7229#
Stevenson Enchantress 449J#
Baldrige Joaquin 136J
Wical Blackcap 053

CED	BW	WW	YW	CEM	MILK	MARB	RE	\$M	\$W	\$F	\$B	\$C
5	1.2	72	117	8	26	0.44	0.65	86	66	92	134	260

ADJ %IMF: 3.97, **ADJ RE:** 9.5

Dam Production Record: **BWR** 4@103, **WWR** 3@105, **YWR** 3@101

Dam's Age: 8

37

Arrow One Erica 324

COW REG: 20864225 **DOB:** 02/12/23 **TATTOO:** 324

K C F Bennett Consent Y75#
K C F Bennett Summation
Thomas Patricia 9705

Connealy Consensus#
K C F Miss Protege W148
S S Objective T510 OT26#
Thomas Patricia 71138

ACT BW
74
ADJ WW
630
ADJ YW
958

Connealy Guinness#
Arrow One Erica 720
Arrow One Erica 227

Connealy Dublin 8223#
Panda of Conanga 3609
Arrow One Long Answer
Arrow one Miss Erica 012

CED	BW	WW	YW	CEM	MILK	MARB	RE	\$M	\$W	\$F	\$B	\$C
11	-0.2	72	129	9	31	0.74	0.73	63	67	105	164	276

ADJ %IMF: 4.74, **ADJ RE:** 9.5

Dam Production Record: **BWR** 2@98, **WWR** 4@103, **YWR** 3@107

Dam's Age: 6

ARROW ONE ANGUS

38

Arrow One Pride 327

COW REG: 20854212 DOB: 02/13/23 TATTOO: 327

V A R Legend 5019#
Schaack Wickwire 8344
 Woodside Rita 4P10 of 1351

Connealy Counselor#
Arrow One Pride 688
 Arrow One Pride 874

V A R Discovery 2240#
 PF CC&7 Henrietta Pride 1044
 G A R Prophet#
 Goode Complete 1351

Connealy Mentor 7374#
 Jaze of Conanga 234
 Arrow One Rancher 65
 Arrow One Pride 640

ACT BW
81
ADJ WW
687
ADJ YW
844

CED	BW	WW	YW	CEM	MILK	MARB	RE	\$M	\$W	\$F	\$B	\$C
6	0.9	69	124	8	30	0.96	0.57	52	63	92	160	260

ADJ %IMF: 5.32, ADJ RE: 8.6

Dam Production Record: **BWR** 4@101, **WWR** 3@106, **YWR** 3@98

Dam's Age: 7

39

Arrow One Blackbird 332

COW REG: 20854213 DOB: 02/15/23 TATTOO: 332

V A R Legend 5019#
Schaack Wickwire 8344
 Woodside Rita 4P10 of 1351

Arrow One Chisim 265
Arrow One Blackbird 5118
 Arrow one Blackbird 035

V A R Discovery 2240#
 PF CC&7 Henrietta Pride 1044
 G A R Prophet#
 Goode Complete 1351

S Chisim 6175#
 Arrow One Duchess 083
 Arrow One Rancher 65
 Arrow One Blackbird 418

ACT BW
75
ADJ WW
607
ADJ YW
764

CED	BW	WW	YW	CEM	MILK	MARB	RE	\$M	\$W	\$F	\$B	\$C
7	0.6	55	102	10	32	0.88	0.40	63	56	87	147	254

ADJ %IMF: 4.48, ADJ RE: 7.6

Dam Production Record: **BWR** 7@103, **WWR** 6@98, **YWR** 5@94

Dam's Age: 8

Wayne and Dona Rundback
3453 Brown Road
North Platte, NE 69101

ARROW ONE ANGUS

21st Annual Bull Sale

SUNDAY - 3:00 PM

APRIL 7, 2024

**AT THE RANCH SOUTH OF
NORTH PLATTE, NEBRASKA**